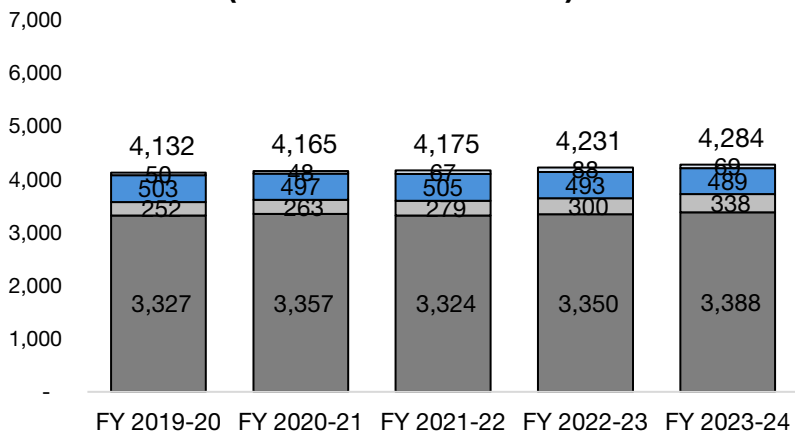


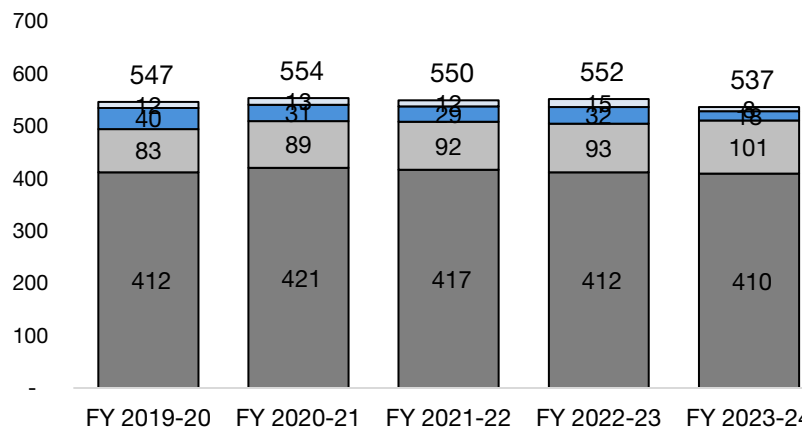
- Non-URM Faculty Retained
- URM Faculty Retained
- Non-URM Faculty New Hires
- URM Faculty New Hires

Faculty | Retained + New Hires

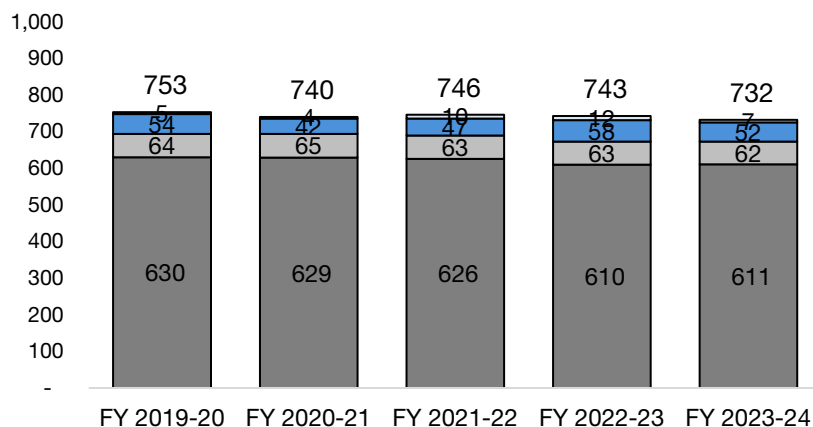
Boulder | Faculty Population (Retained + New Hires)



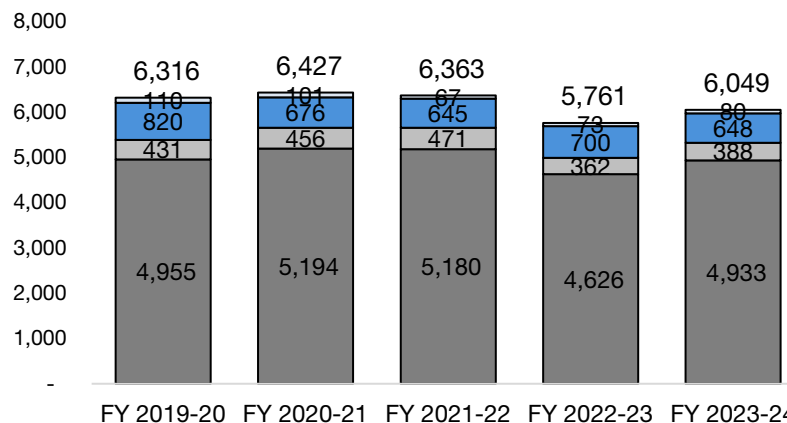
UCCS | Faculty Population (Retained + New Hires)



Denver | Faculty Population (Retained + New Hires)



Anschutz | Faculty Population (Retained + New Hires)



2019-20 to 2023-24

URM (Under-Represented Minority) is defined uniquely at each campus based on the campus population.

Faculty includes all non-temporary employees who were active on the last day of the prior time period.

Supplemental faculty and other faculty have been excluded.

Staff | Retained + New Hires

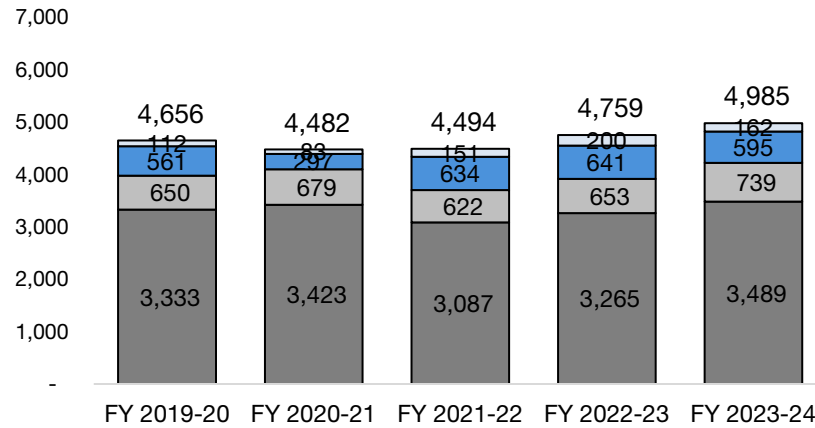
- Non-URM Staff Retained
- URM Staff Retained
- Non-URM Staff New Hires
- URM Staff New Hires

2019-20 to 2023-24

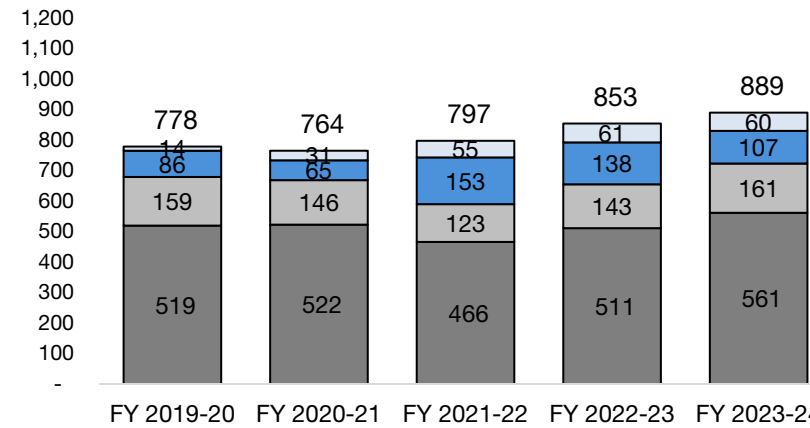
URM (Under-Represented Minority) is defined uniquely at each campus based on the campus population.

Faculty includes all non-temporary employees who were active on the last day of the prior time period.

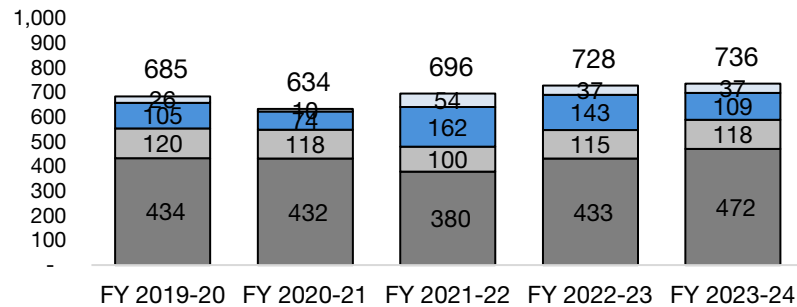
Boulder | Staff Population (Retained + New Hires)



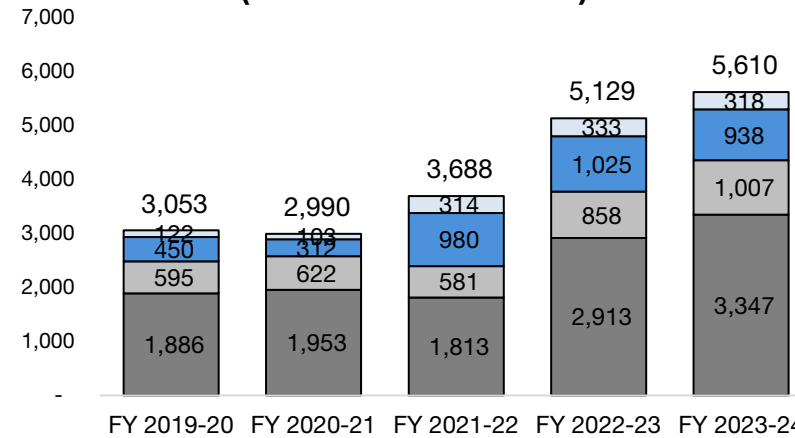
UCCS | Staff Population (Retained + New Hires)



Denver | Staff Population (Retained + New Hires)



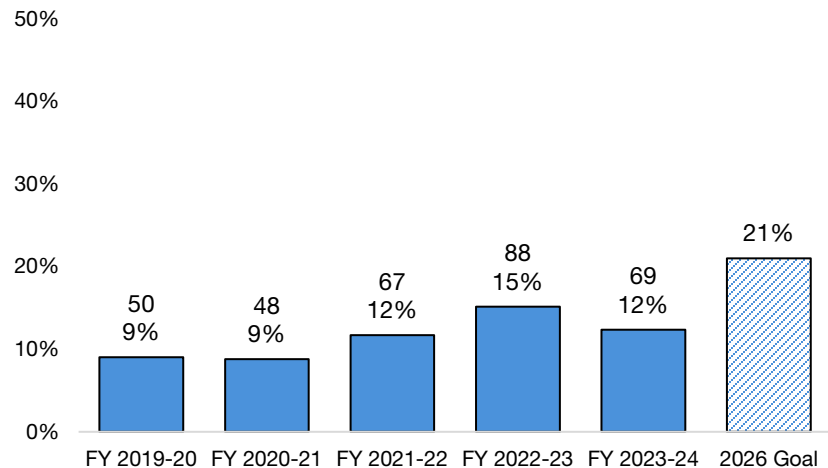
Anschutz | Staff Population (Retained + New Hires)



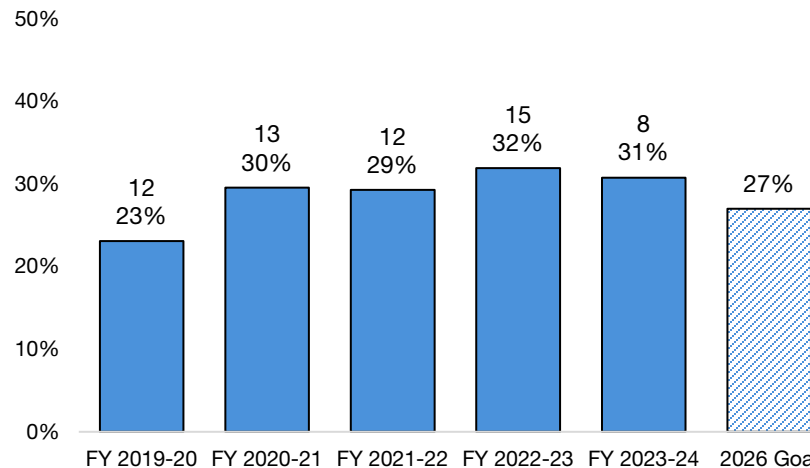
Faculty New Hires | Percentage URM

★ STRATEGIC METRIC WITH 2026 GOAL

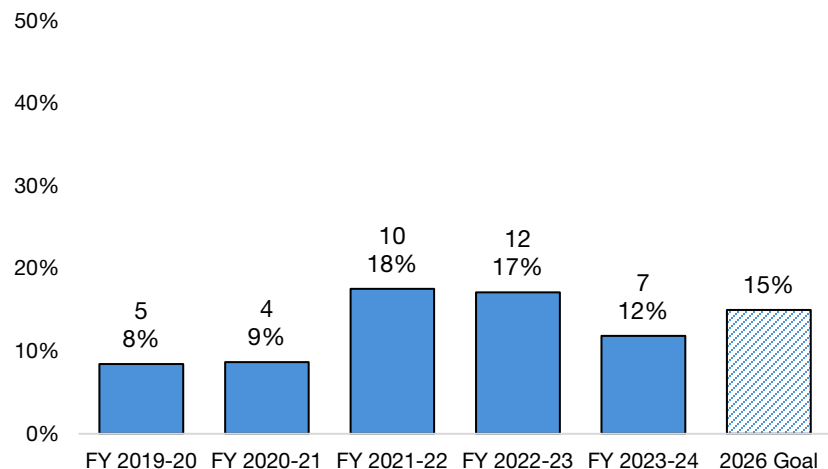
Boulder



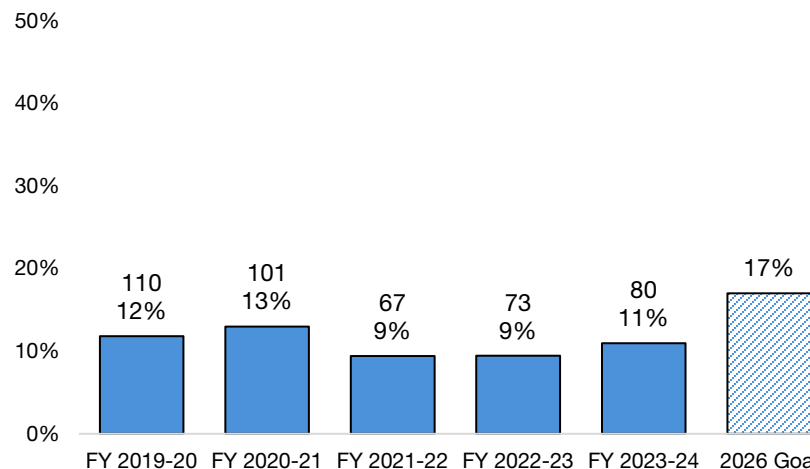
UCCS



Denver



Anschutz



2019-20 to 2023-24

URM (Under-Represented Minority) is defined uniquely at each campus based on the campus population.

Faculty includes all non-temporary employees who were active on the last day of the prior time period.

Supplemental faculty and other faculty have been excluded.



University of Colorado

Boulder | Colorado Springs | Denver | Anschutz Medical Campus

Staff New Hires | Percentage URM

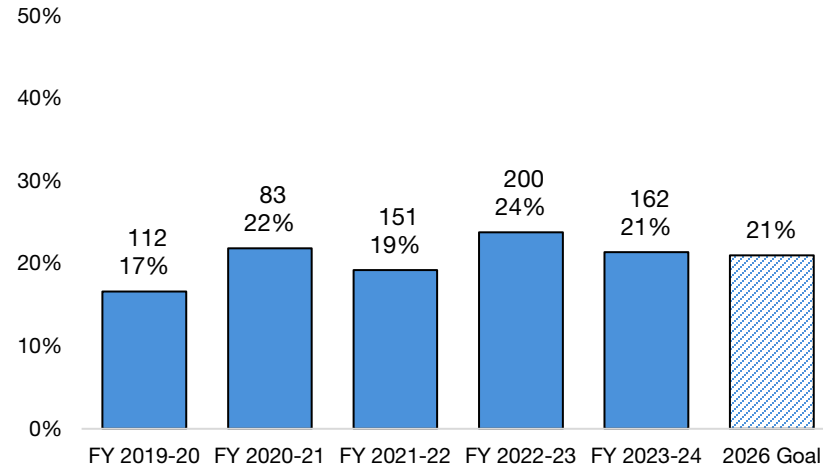
★ STRATEGIC METRIC WITH 2026 GOAL

2019-20 to 2023-24

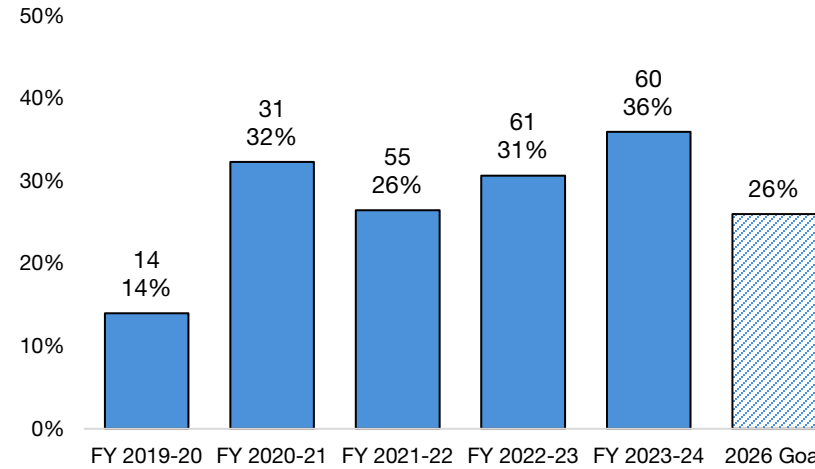
URM (Under-Represented Minority) is defined uniquely at each campus based on the campus population.

Faculty includes all non-temporary employees who were active on the last day of the prior time period.

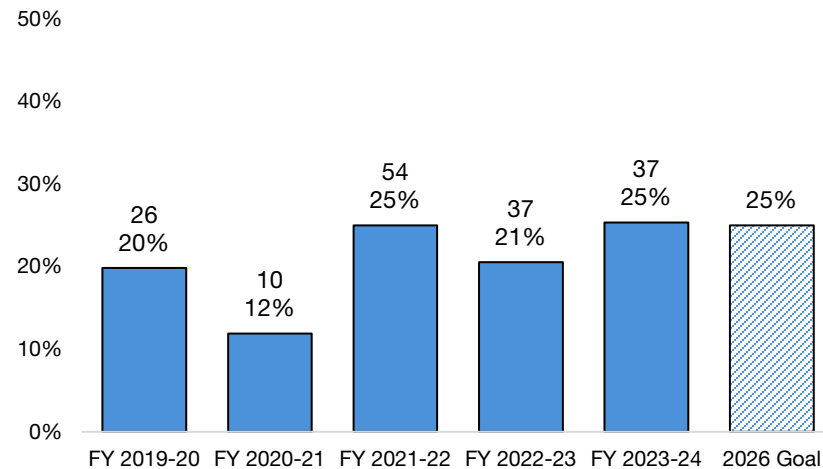
Boulder



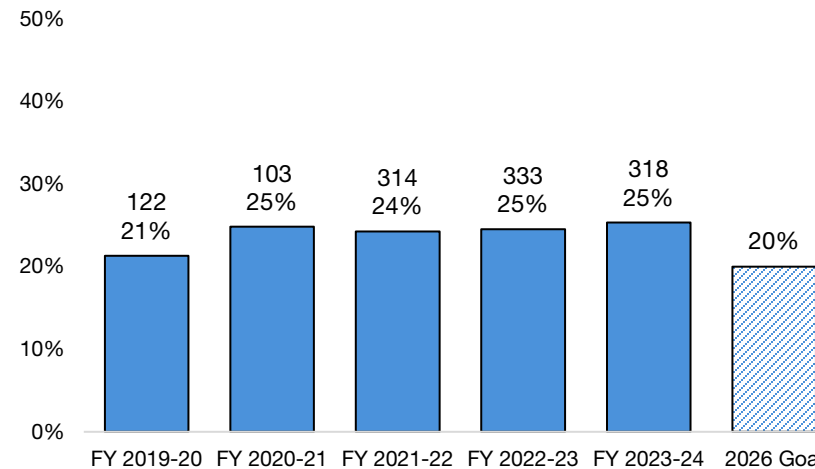
UCCS



Denver



Anschutz



University of Colorado

Boulder | Colorado Springs | Denver | Anschutz Medical Campus

Faculty New Hires | Percentage Veteran

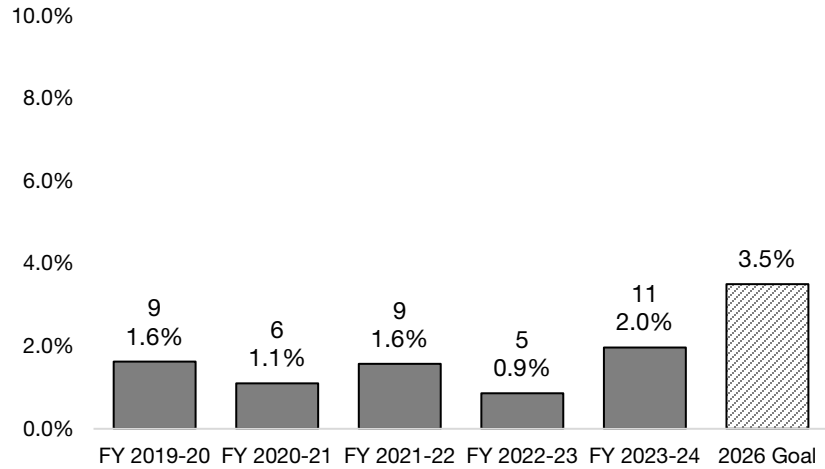
★ STRATEGIC METRIC WITH 2026 GOAL

2019-20 to 2023-24

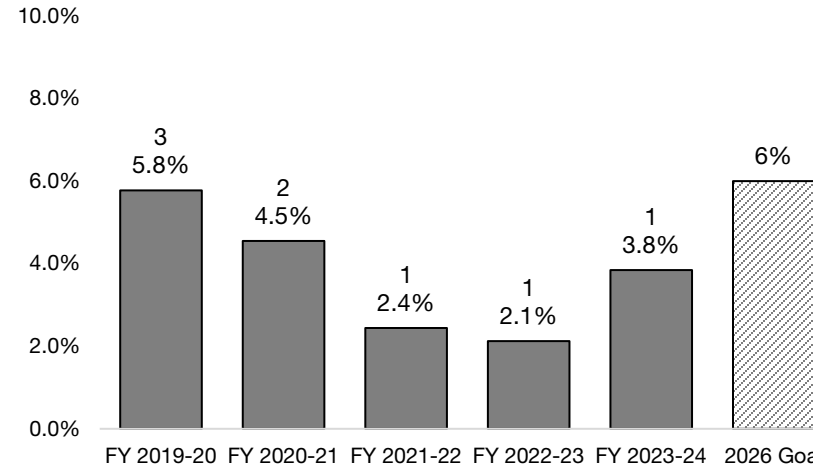
Veteran includes all categories of Protected Veterans as self-reported in HCM.

Supplemental faculty and other faculty have been excluded.

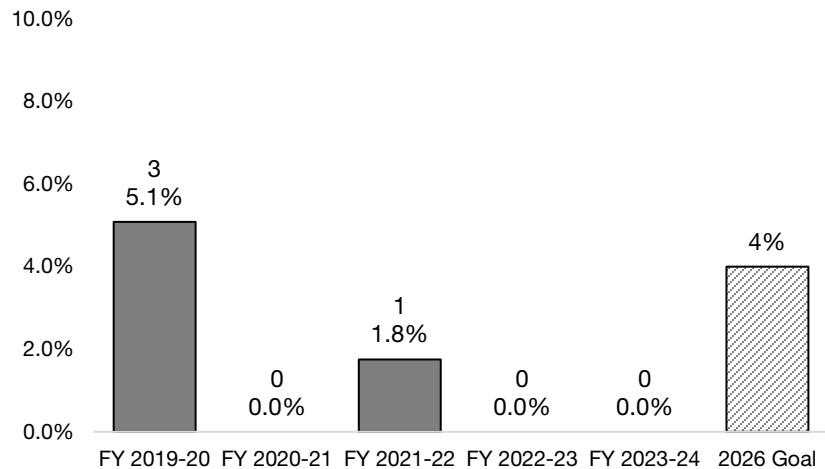
Boulder



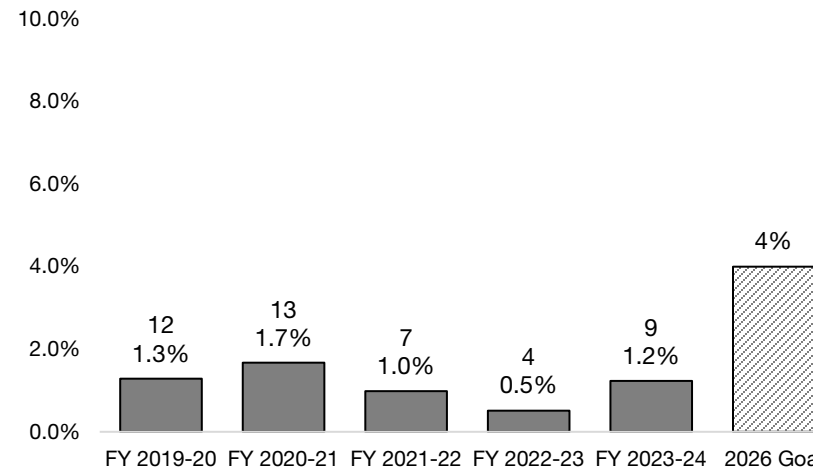
UCCS



Denver



Anschutz



University of Colorado

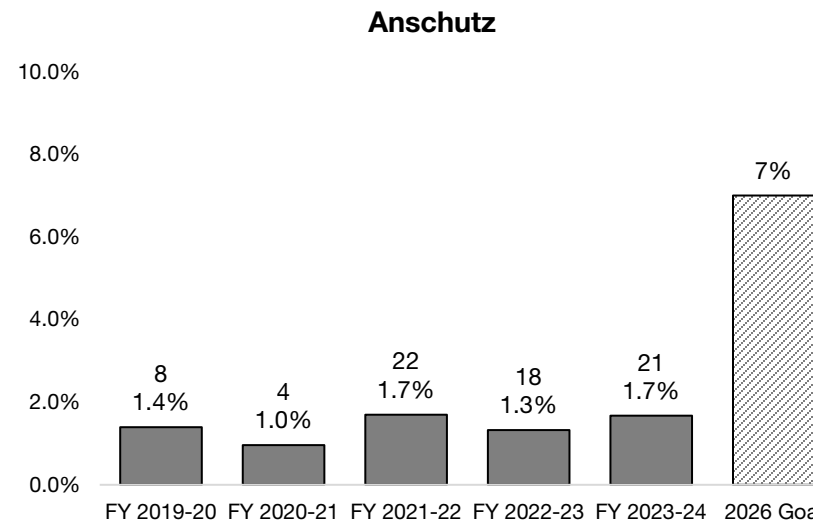
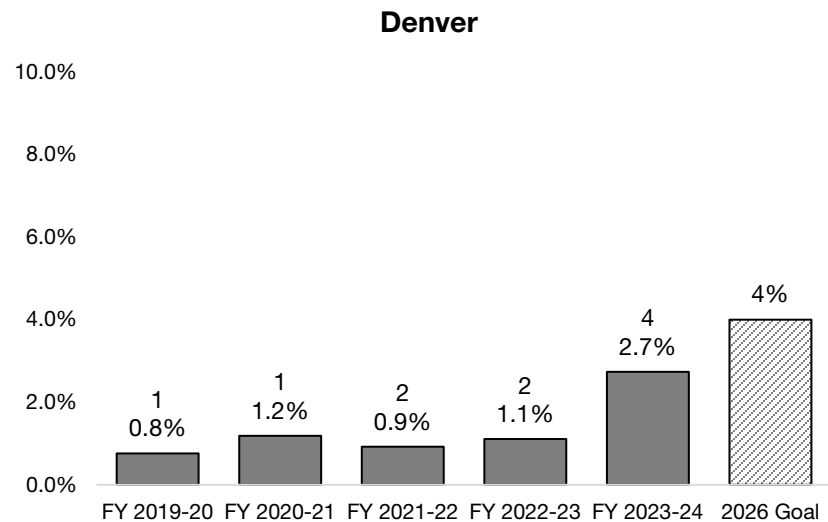
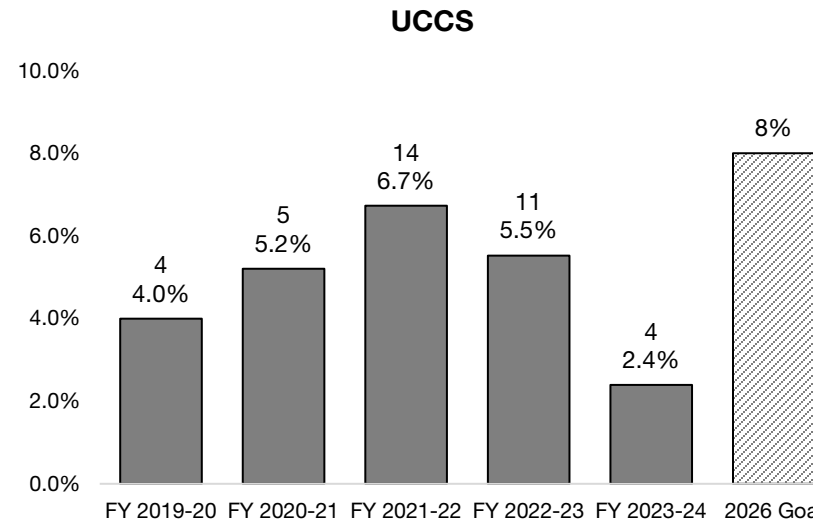
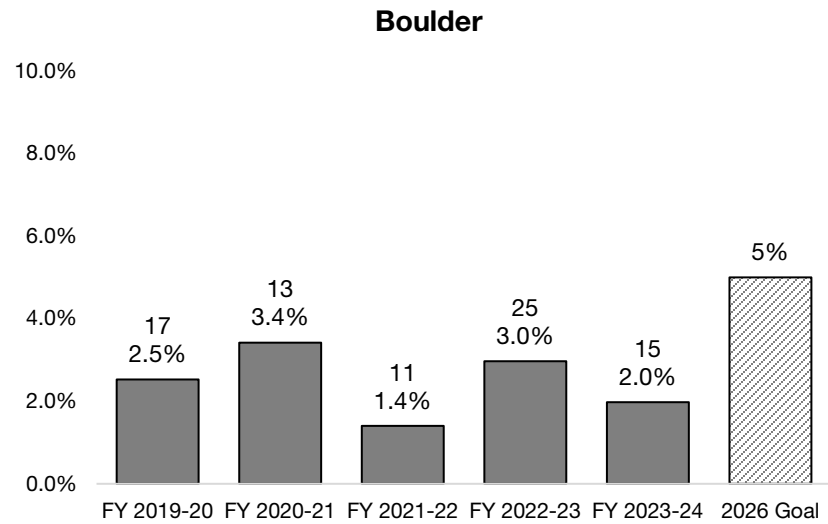
Boulder | Colorado Springs | Denver | Anschutz Medical Campus

Staff New Hires | Percentage Veteran

★ STRATEGIC METRIC
WITH 2026 GOAL

2019-20 to 2023-24

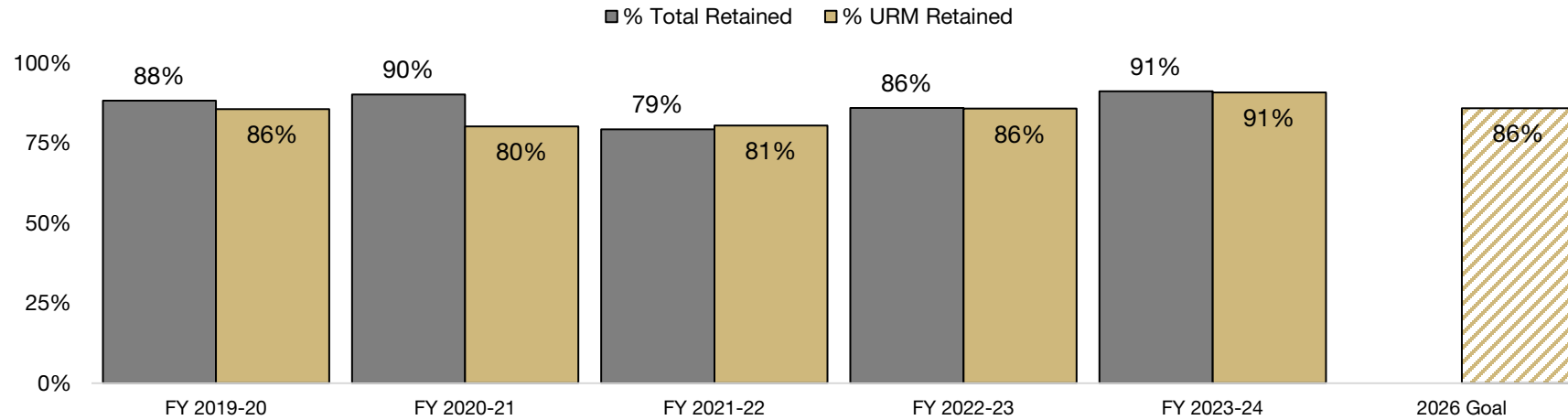
Veteran includes all categories of Protected Veterans as self-reported in HCM.



System Administration | Employee Retention & New Hires

★ STRATEGIC METRIC WITH 2026 GOAL

Retention Rates

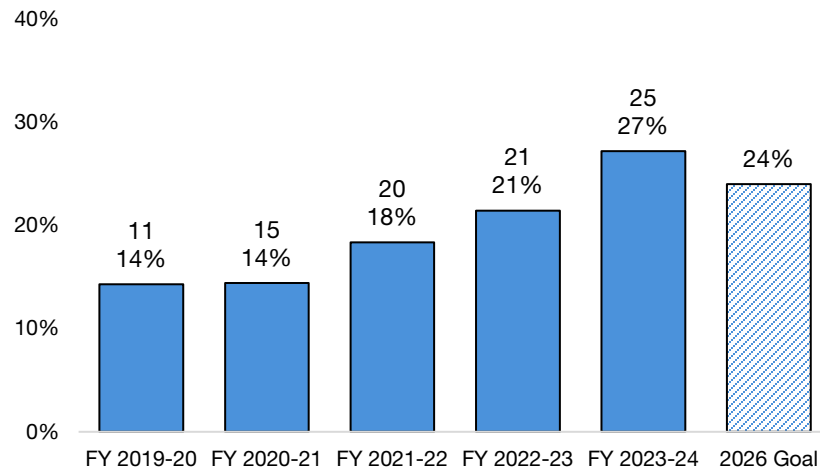


2019-20 to 2023-24

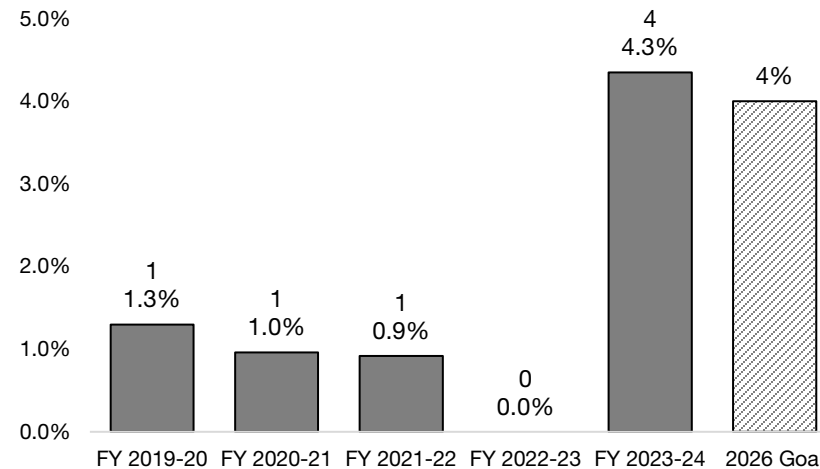
System Administration URM (Under-Represented Minority) includes:

- American Indian or Alaskan Native
- Black or African American
- Hispanic or Latino
- Native Hawaiian or Other Pacific Islander
- More than one race (with underlying categories listed above)

% URM Staff New Hires



% Veteran Staff New Hires



Veteran includes all categories of Protected Veterans as self-reported in HCM.