

OnBase Quick Reference Guide

Scanning Documents

This Quick Reference Guide covers setting up the scan station and using a scanner to import batches of documents into OnBase using the Unity client installed on a Windows PC. Departments are generally licensed for one to two scanners per group. To install the Unity client, refer to the [OnBase Web URLs and Unity Client ClickOnce URLs](#).

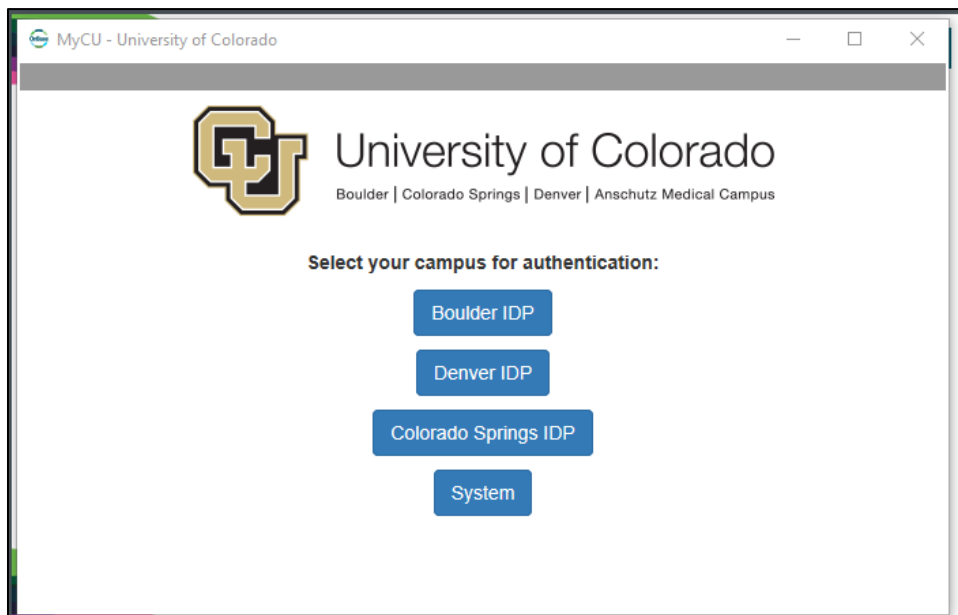
Batch Indexing is covered in separate guides ([Indexing documents – Unity Client](#) and [Indexing documents – Web Client](#)).

Configuring your Scan Station

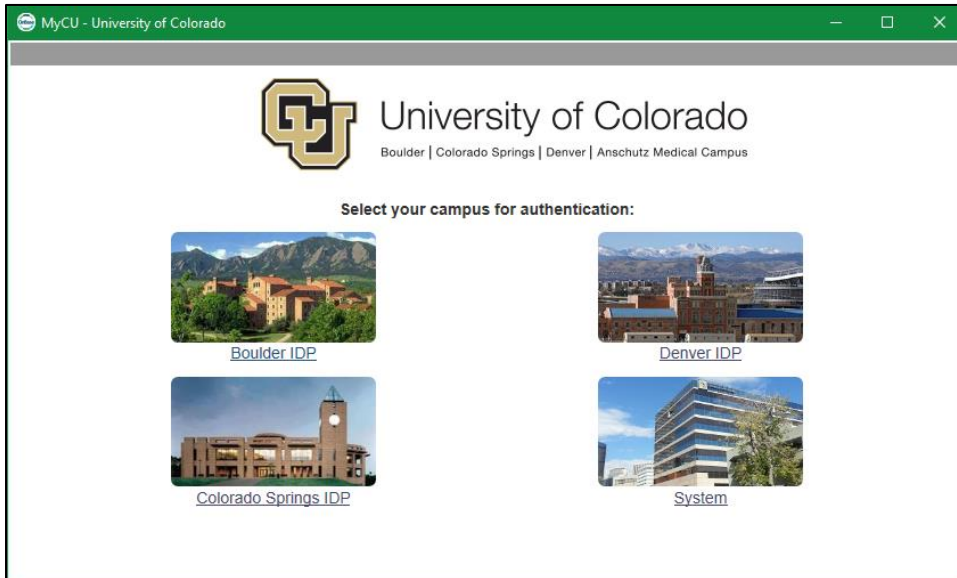
Perform these steps to configure your scan station. Not all users will have access to make these changes; contact your [departmental administrator](#) or [UIS](#) for assistance if necessary. You should only have to perform these steps once for each scan station.

1. Login into the Unity Client with your campus credentials.

First, select your campus. Depending on the size of the window, you may see campus names only or the campus names along with pictures. Single click on campus names or double click if the picture is displayed.

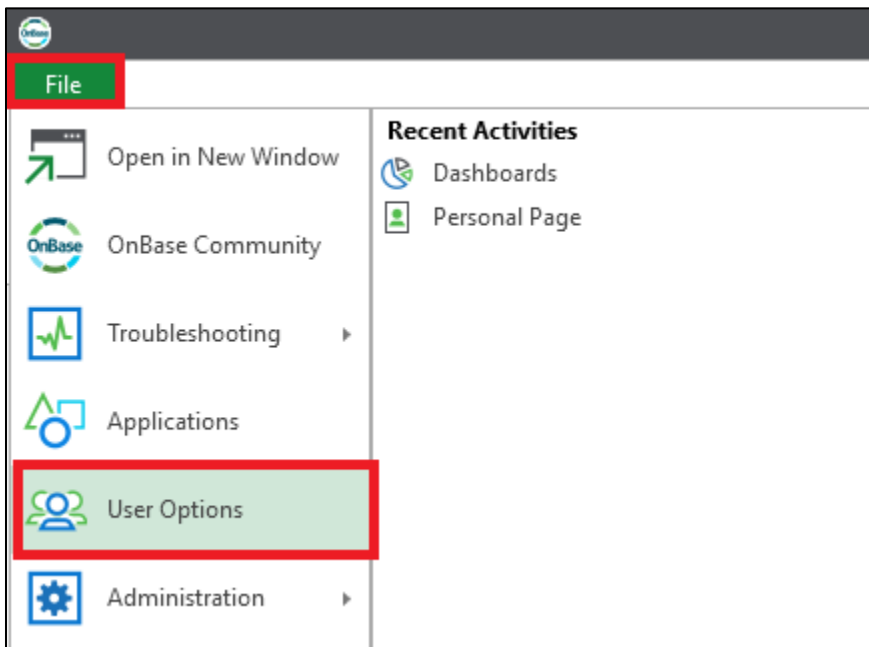


Single click to select the desired campus.

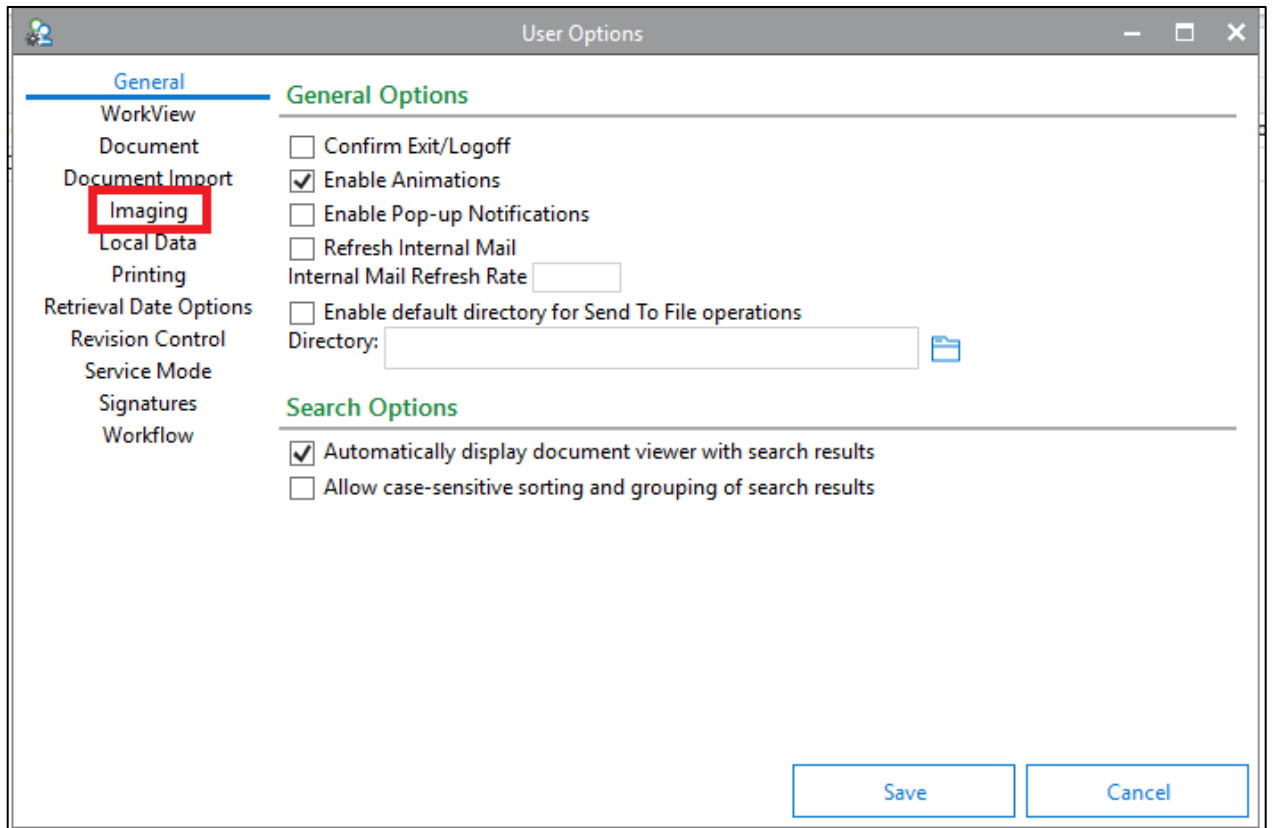


Double click to select the desired campus.

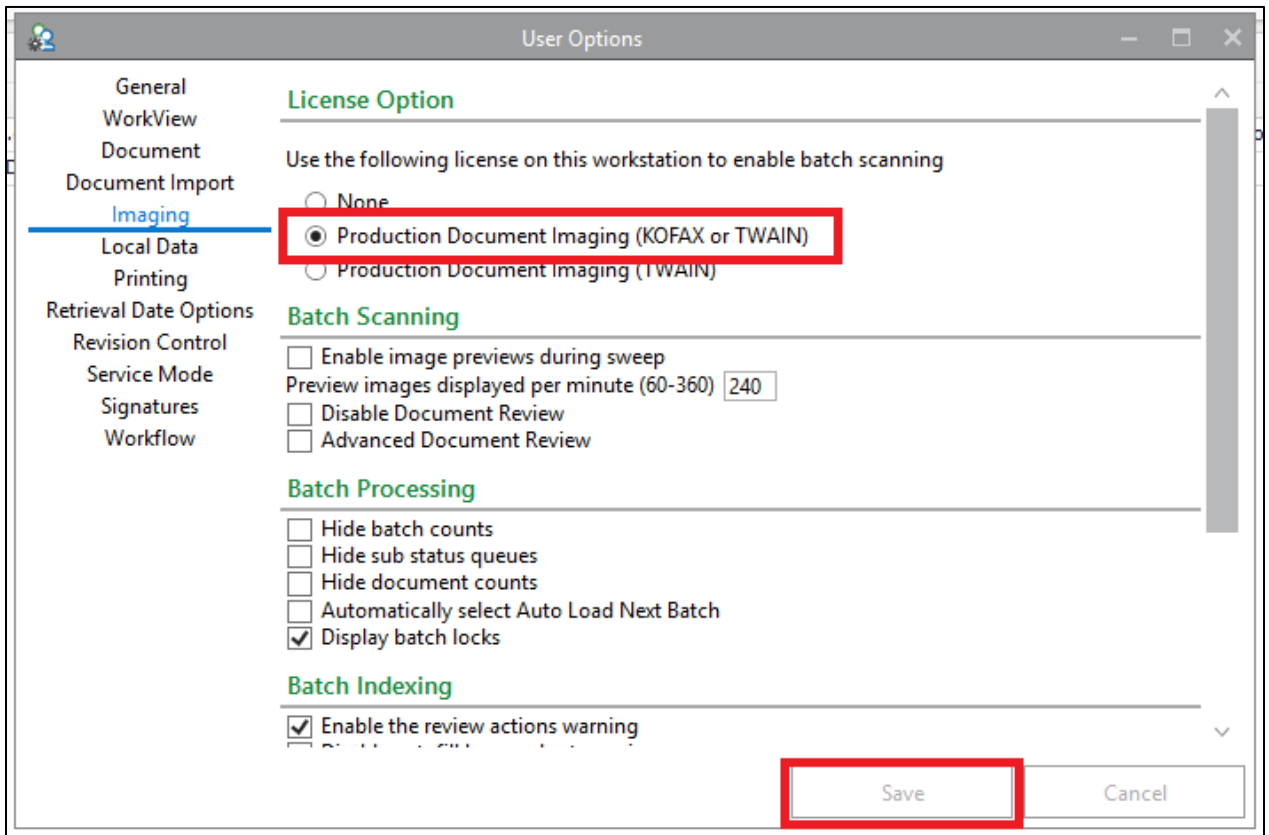
2. Enter your campus credentials. For assistance with your campus credentials, refer to the links on the login page for your campus. Go to the **File** menu and select **User Options**.



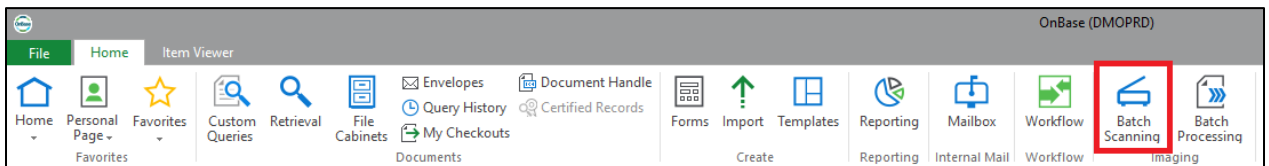
3. Select **Imaging** from the list at the left of the User Options window.



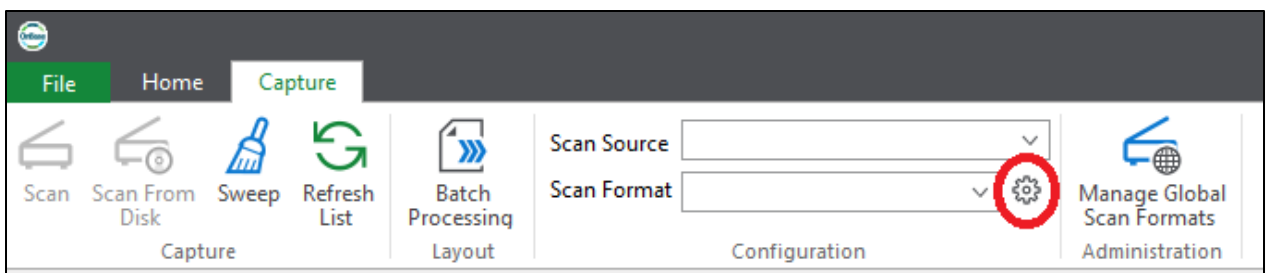
4. Select **Production Document Imaging (KOFAX or TWAIN)** and click **Save**.



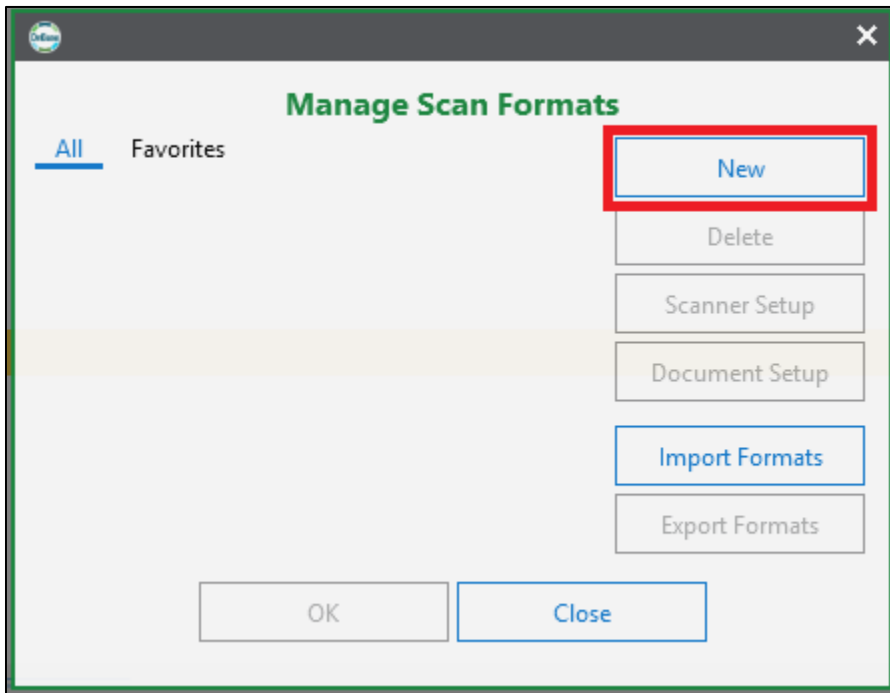
5. Click **Batch Scanning** on the Home tab of the menu



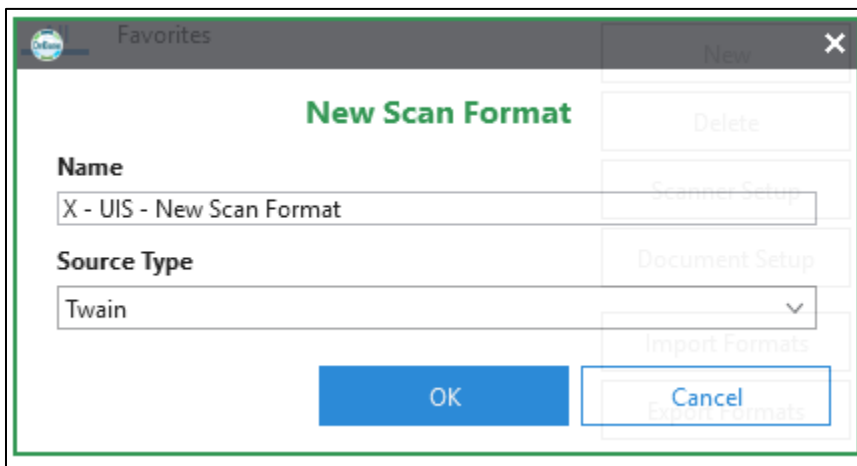
6. Click the gear icon for **Manage Scan Formats** on the Batch Scanning tab of the menu.



7. Click **New** to create a new scan format.



8. Type a name for your new scan format and select the Source Type.

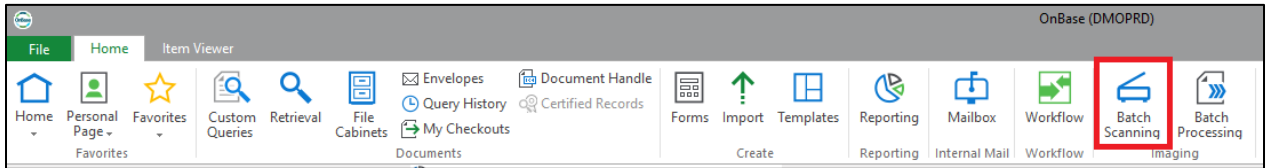


9. Choose your scanner from the available scanners list and click OK.
10. If needed, refer to the appropriate guide in the Scanning/Sweeping section of the [OnBase Training](#) page for instructions on setting up your scanner's profile.

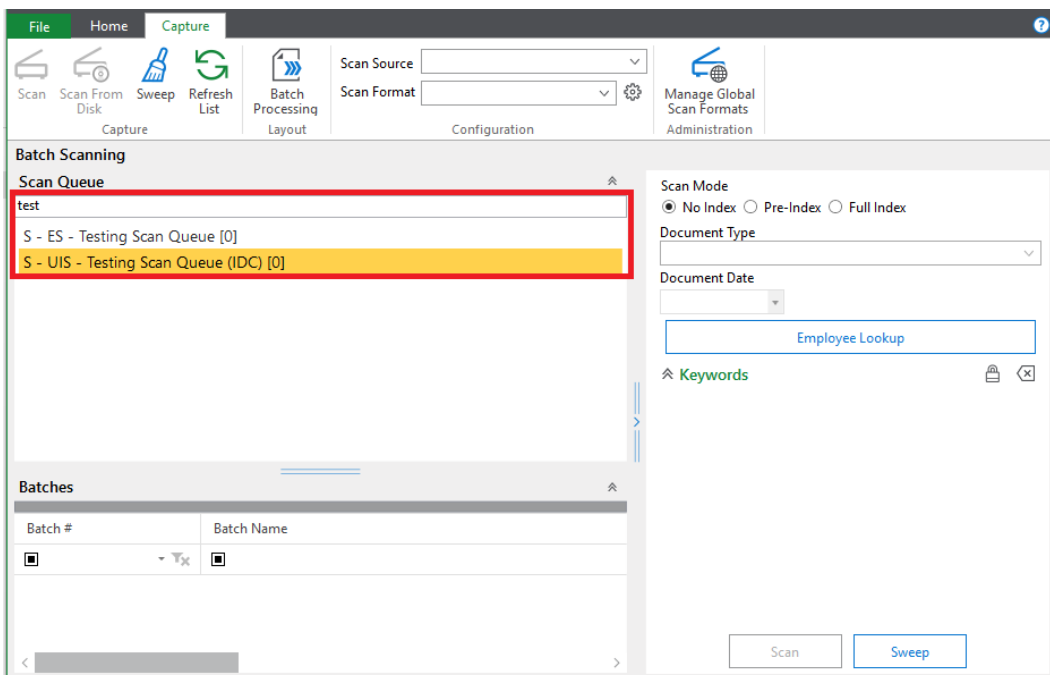
Scanning Documents

Now that your scanner is configured, you are ready to scan your documents. Perform these steps to scan into OnBase.

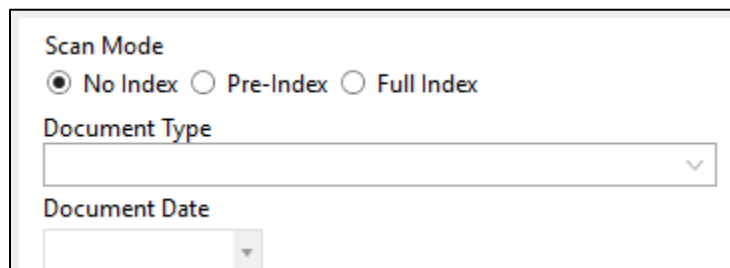
1. Open the Unity client and log in.
2. Click **Batch Scanning** on the Home tab of the menu



3. Choose the appropriate scan queue for the documents being scanned. You can use the search bar at the top of the list to help find the desired scan queue.



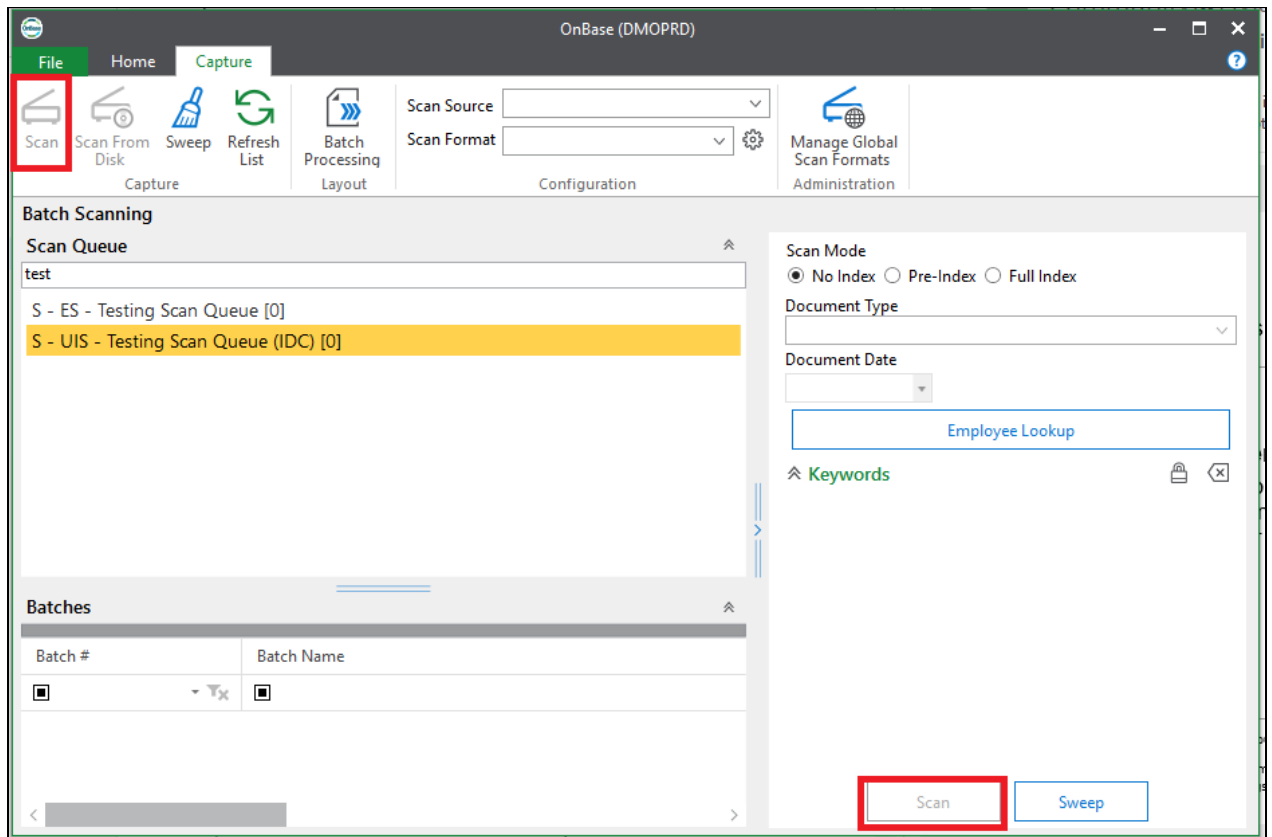
4. Choose one of the following scan modes.



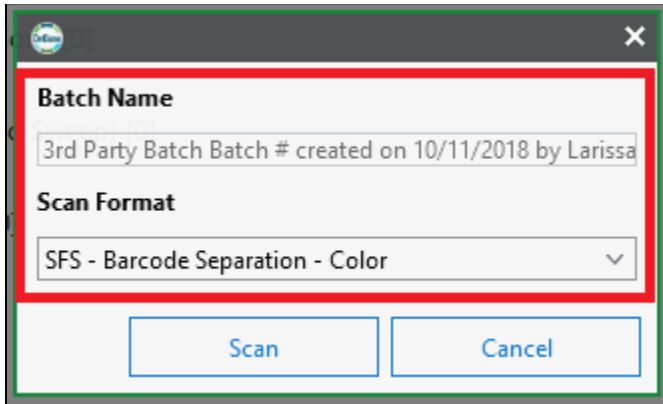
- a. **No index:** All document type selection and keyword value indexing will occur in Batch Processing after the batch is scanned.

- b. **Pre-index:** The document type will be selected prior to scanning the batch. Keyword values can be entered as well, but the batch will still require additional indexing for other keyword values.
- c. **Full Index:** The document type and all keyword values will be entered prior to scanning the batch. The batch will bypass the initial indexing status queue and will move straight to the *Awaiting Commit* status if no other indexing is required.

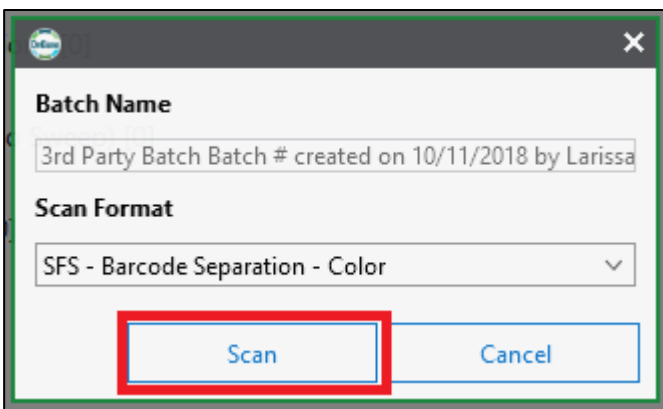
5. Click **Scan** in the lower right-hand panel or on the Capture tab of the menu.



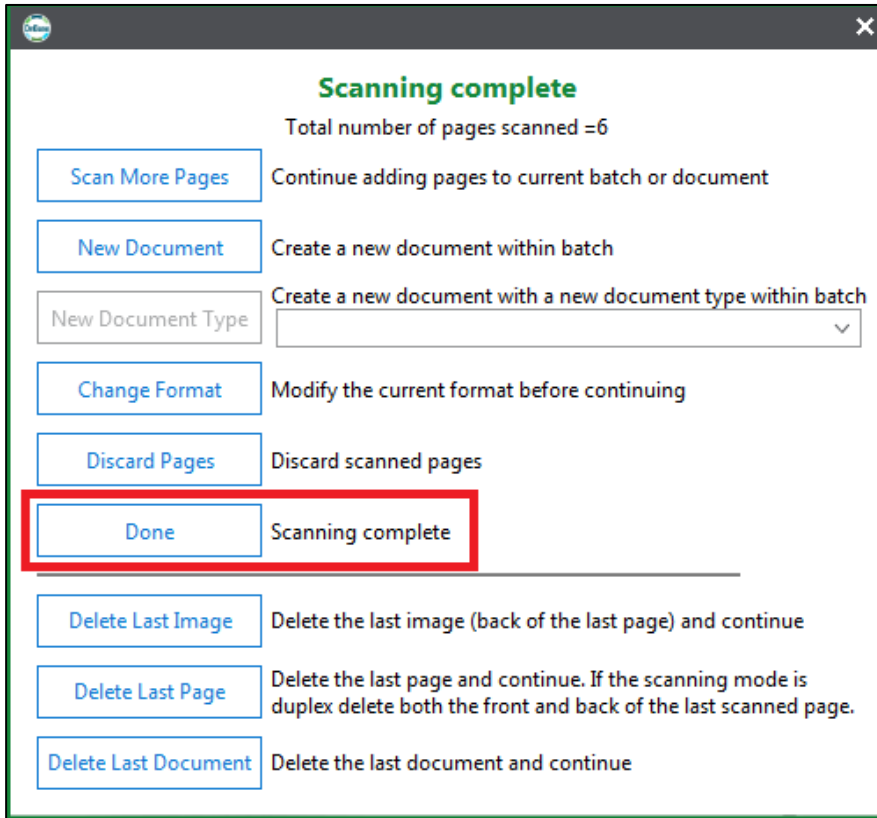
6. Enter a name for your batch (if prompted, some scan queues will create the name automatically) and select your scan format.



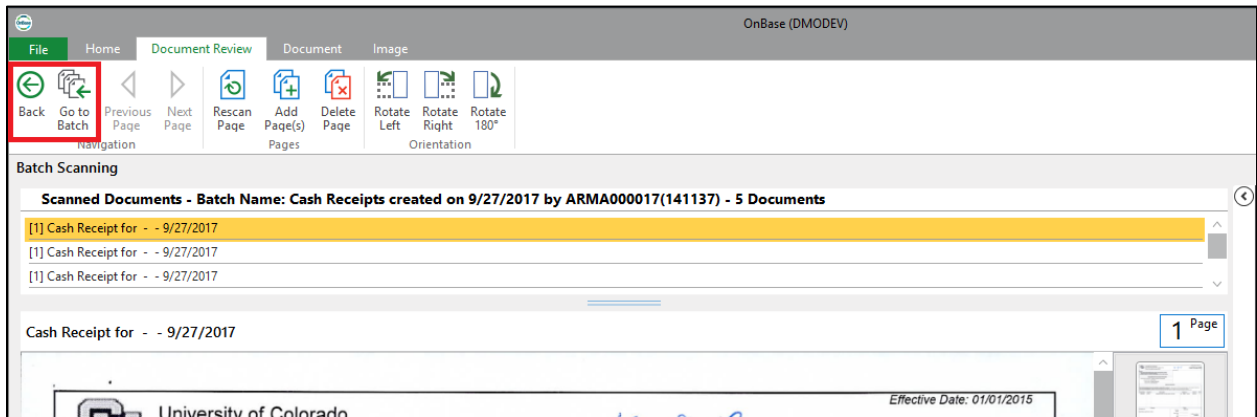
7. At this time, make sure the documents have been placed into the scanner's feeder tray and are ready for scanning (staples, paper clips and sticky notes removed). Then click **Scan**.



8. When all pages have been scanned, you will be prompted with the following options. Most of the time "Done" should be used.



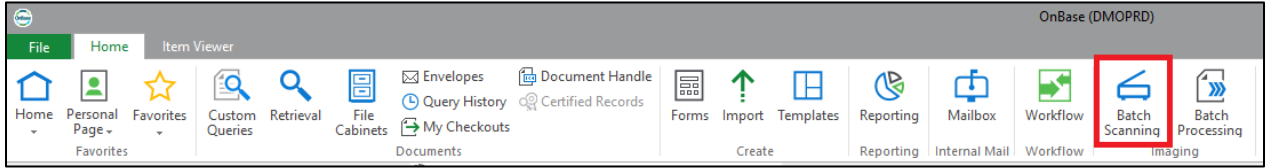
9. At this time, you can review pages and make any necessary changes. If Advanced Document Review is enabled in User Options, that will be displayed at this time. When you are ready to send the batch to indexing, click **Back** to go back to Batch Scanning to scan another batch or **Go to Batch** to go to Batch Processing and begin indexing.



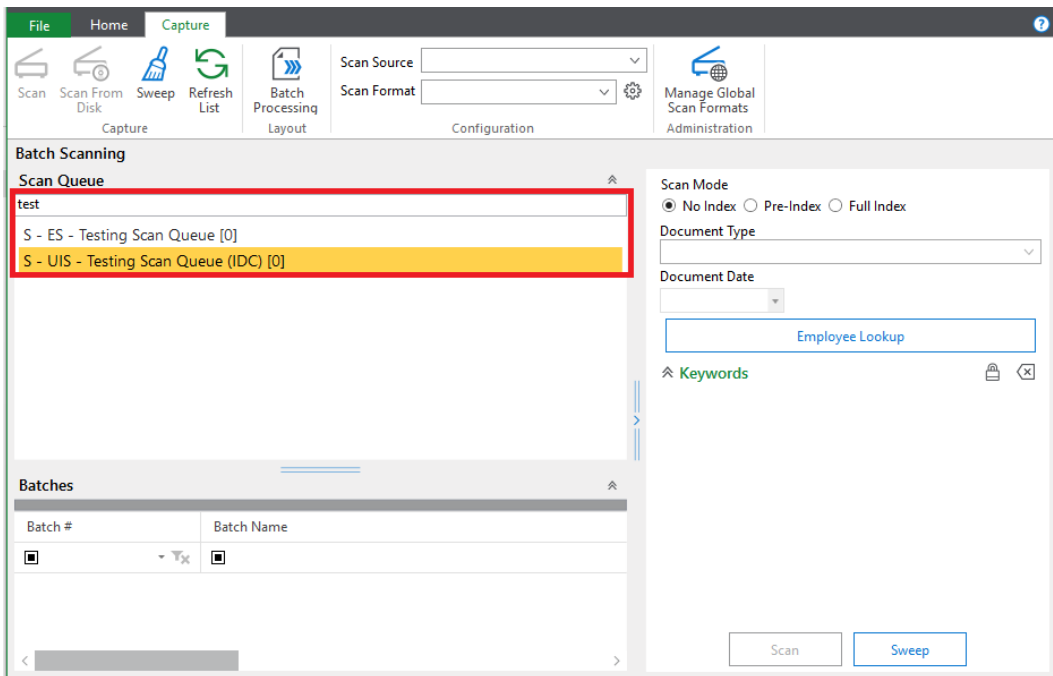
Sweeping Documents

In addition to scanning paper copies, OnBase also allows for documents that already exist electronically to be imported as batches from a folder on your computer or network. Perform these steps to sweep into OnBase.

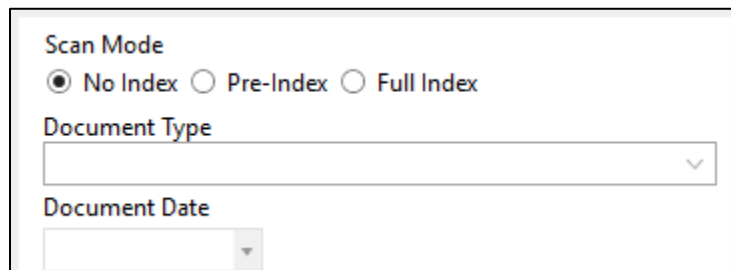
1. Open the Unity client and log in.
2. Click **Batch Scanning** on the Home tab of the menu



3. Choose the appropriate scan queue for the documents being scanned. You can use the search bar at the top of the list to help find the desired scan queue.



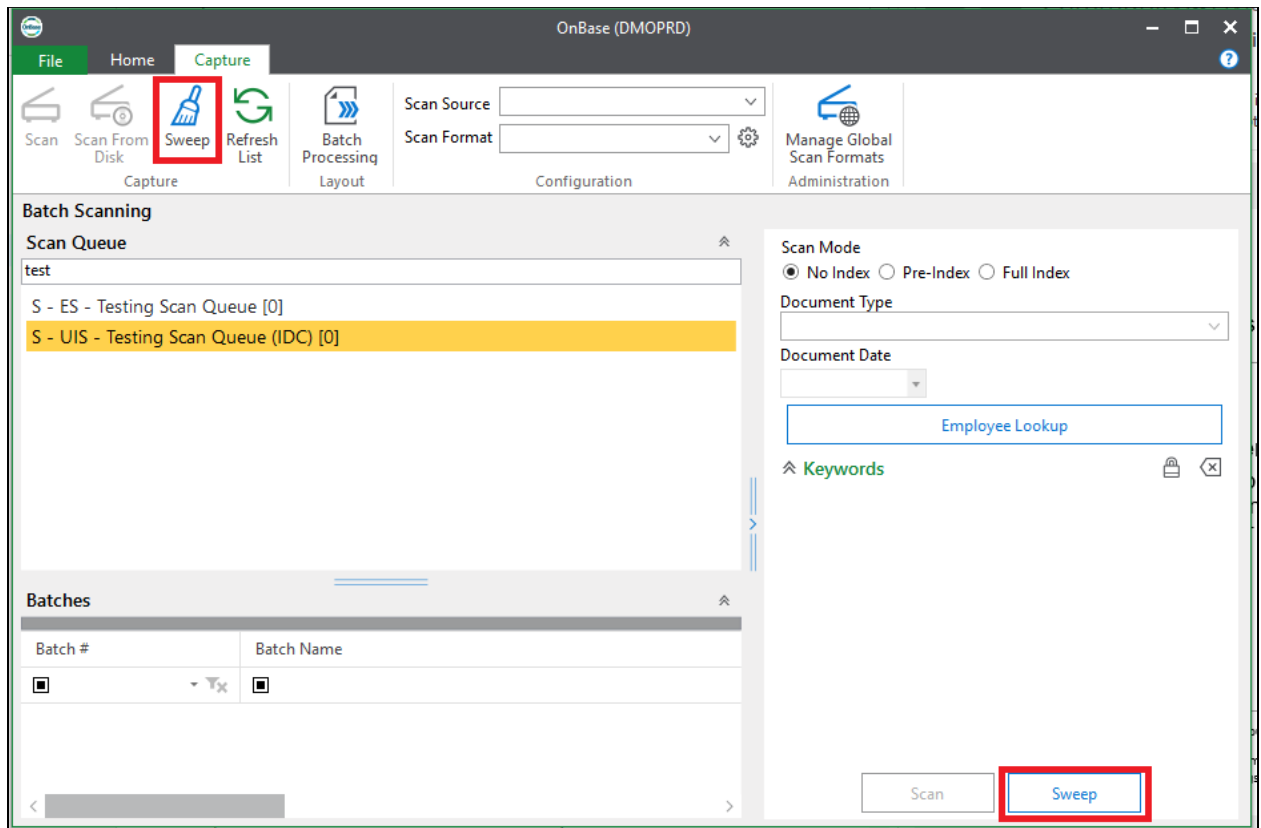
4. Choose one of the following scan modes.



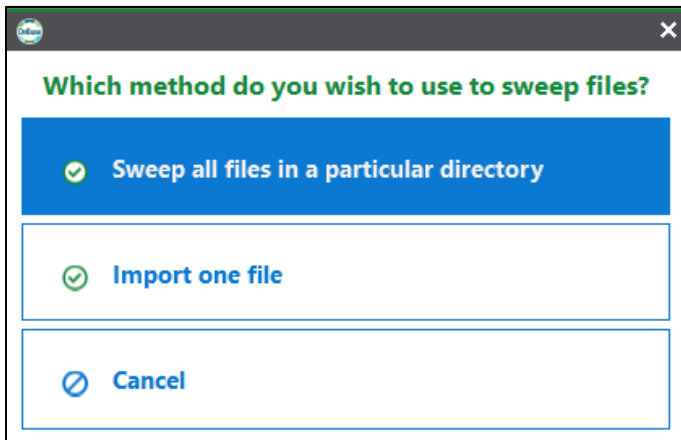
- a. **No index:** All document type selection and keyword value indexing will occur in Batch Processing after the batch is scanned.

- b. **Pre-index:** The document type will be selected prior to scanning the batch. Keyword values can be entered as well, but the batch will still require additional indexing for other keyword values.
- c. **Full Index:** The document type and all keyword values will be entered prior to scanning the batch. The batch will bypass the initial indexing status queue and will move straight to the *Awaiting Commit* status if no other indexing is required.

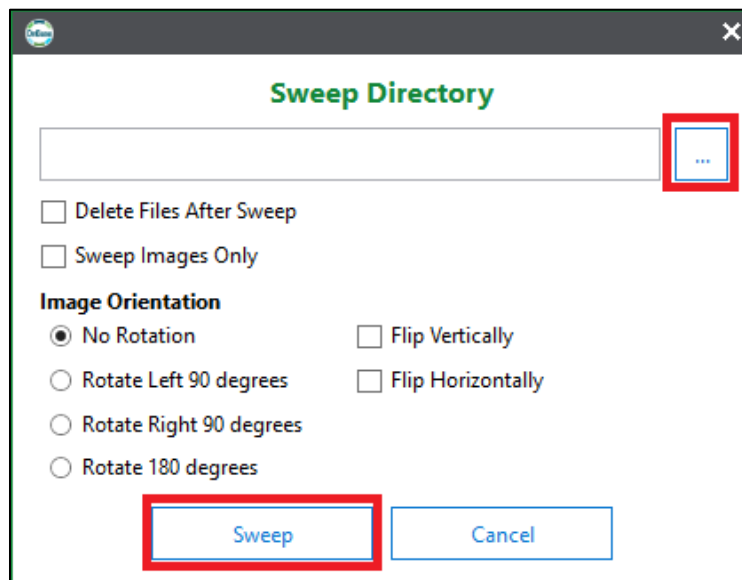
5. Click **Sweep** in the lower right-hand panel or on the Capture tab of the menu.



6. Choose whether you would like to sweep all files in a folder, or just one file.



- To sweep all files in a folder, click the browse button at the right and navigate to the desired folder. Make any optional selections, then click **Sweep**.



- If you choose to sweep only one file, a file browser window will open. Navigate to the desired document and click **Open**.

7. At this time, you can review pages and make any necessary changes. If Advanced Document Review is enabled in User Options, that will be displayed at this time. When you are ready to send the batch to indexing, click **Back** to go back to Batch Scanning to scan another batch or **Go to Batch** to go to Batch Processing and begin indexing.

OnBase (DMODEV)

File Home Document Review Document Image

Back Go to Batch Previous Page Next Page Rescan Page Add Page(s) Delete Page Rotate Left Rotate Right Rotate 180°

Navigation Pages Orientation

Batch Scanning

Scanned Documents - Batch Name: Cash Receipts created on 9/27/2017 by ARMA000017(141137) - 5 Documents

- [1] Cash Receipt for - - 9/27/2017
- [1] Cash Receipt for - - 9/27/2017
- [1] Cash Receipt for - - 9/27/2017

Cash Receipt for - - 9/27/2017 1 Page

University of Colorado Effective Date: 01/01/2015