

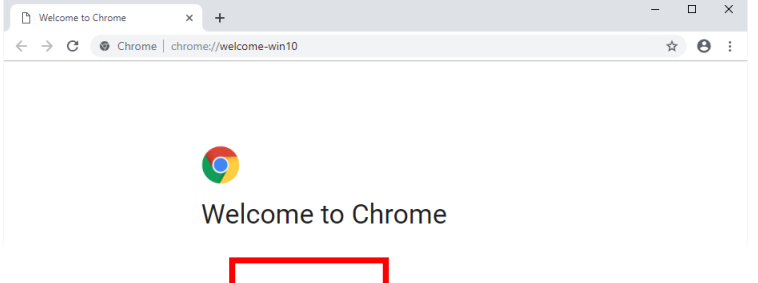
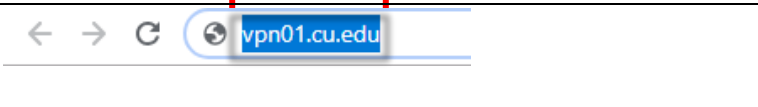
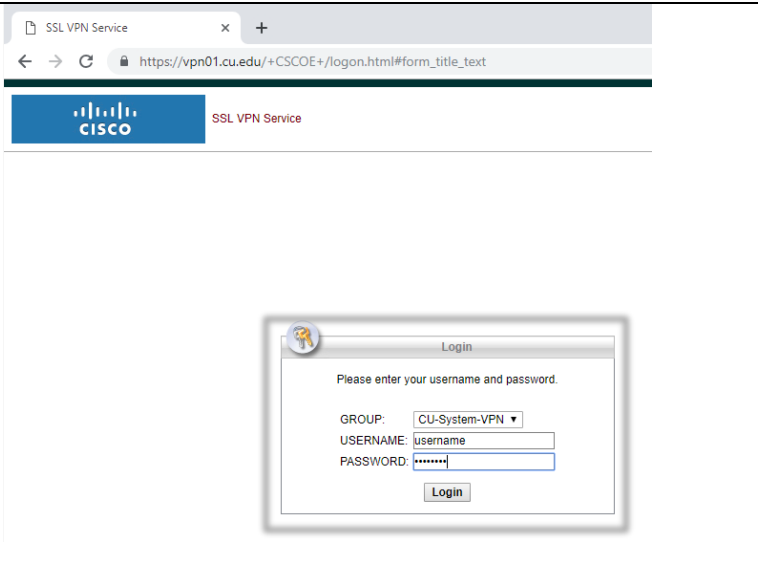
Install and Configure Cisco AnyConnect VPN

PURPOSE:

- Installing and configuring Cisco AnyConnect
- Enabling and Disabling Cisco AnyConnect
- [VPN Options](#)

VERSION SUPPORTED: 4.5.02033

HOW TO INSTALL AND CONFIGURE CISCO ANYCONNECT VPN FOR WINDOWS:

<p>From the desktop, open up a web browser (Google Chrome, Mozilla Firefox, Microsoft Edge, or Internet Explorer).</p> <p>Note: Google Chrome will be used in this example.</p>	
<p>Type in vpn01.cu.edu into the address bar.</p>	
<p>You will reach a login page, login using your CU System Username and Password.</p>	



University of Colorado

Boulder | Colorado Springs | Denver | Anschutz Medical Campus

UNIVERSITY INFORMATION SYSTEMS

Contact UIS

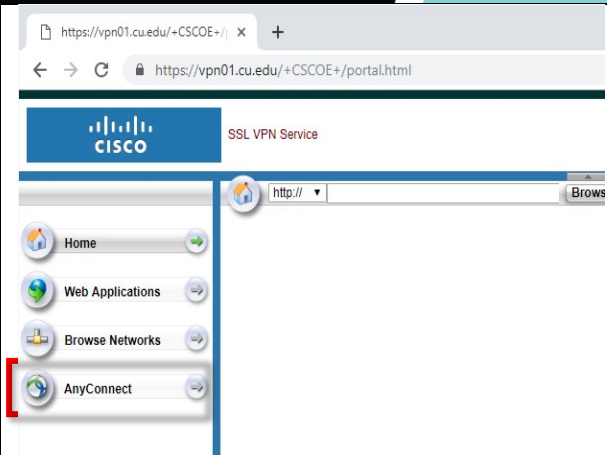
Call: 303-860-4357

Email: help@cu.edu

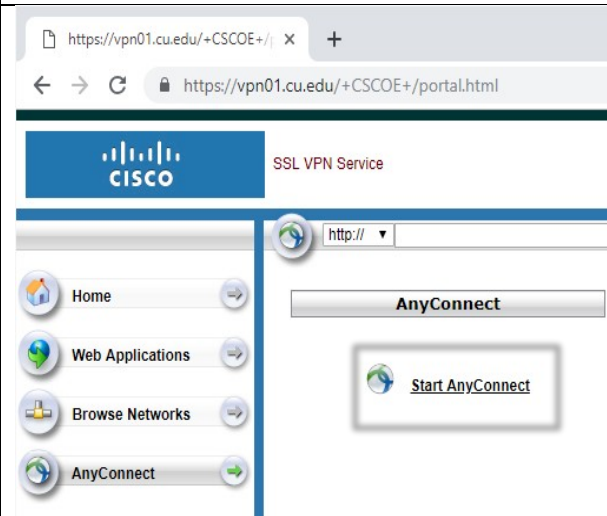
UIS SERVICE DESK

VPN

Click on the AnyConnect button on the bottom of the list on the left-hand side.



Select the "Start AnyConnect" button on that page.



It will then load a few items, after it finishes click the blue link for "AnyConnect VPN"



University of Colorado

Boulder | Colorado Springs | Denver | Anschutz Medical Campus

UNIVERSITY INFORMATION SYSTEMS

Contact UIS

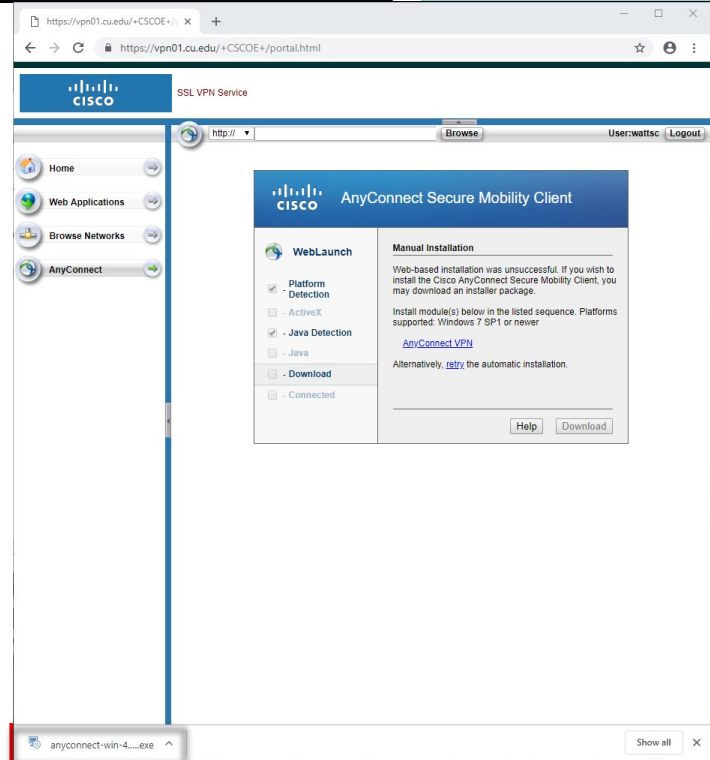
Call: 303-860-4357

Email: help@cu.edu

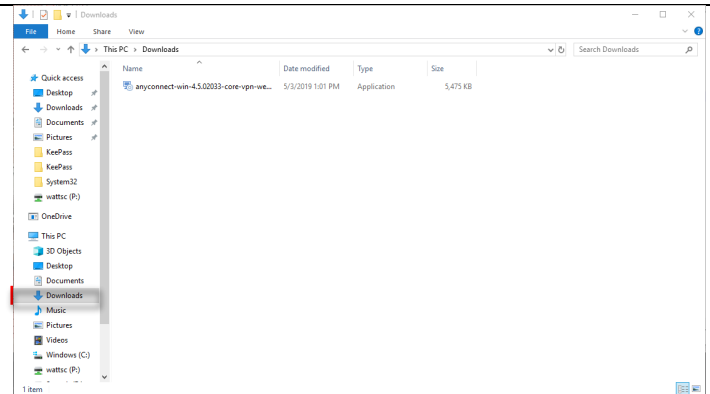
UIS SERVICE DESK

VPN

This will download the client in the web browser, in Google Chrome this shows up on the bottom section of the page, but other browsers may place the download in a different location.



If you cannot find the download, it should go to the Downloads folder within Windows.



University of Colorado
Boulder | Colorado Springs | Denver | Anschutz Medical Campus
UNIVERSITY INFORMATION SYSTEMS

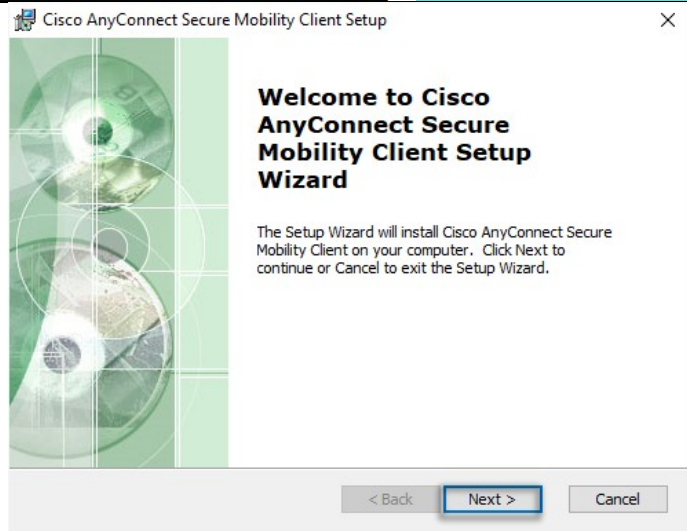
Contact UIS
Call: 303-860-4357
Email: help@cu.edu

UIS SERVICE DESK

VPN

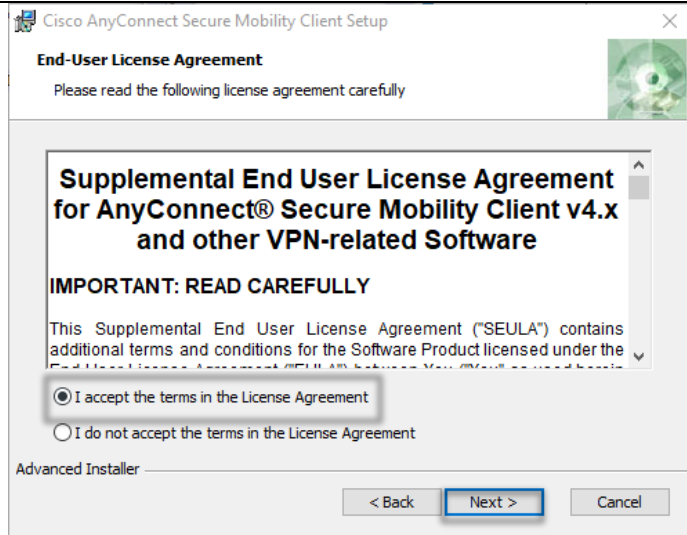
We will then run this download by clicking on it in Chrome. Other browsers may offer a "Run" option instead, which acts the same. It will then open up an installer.

Click "Next."



Select the "I accept the terms in the License Agreement" button.

Click "Next."



University of Colorado

Boulder | Colorado Springs | Denver | Anschutz Medical Campus

UNIVERSITY INFORMATION SYSTEMS

Contact UIS

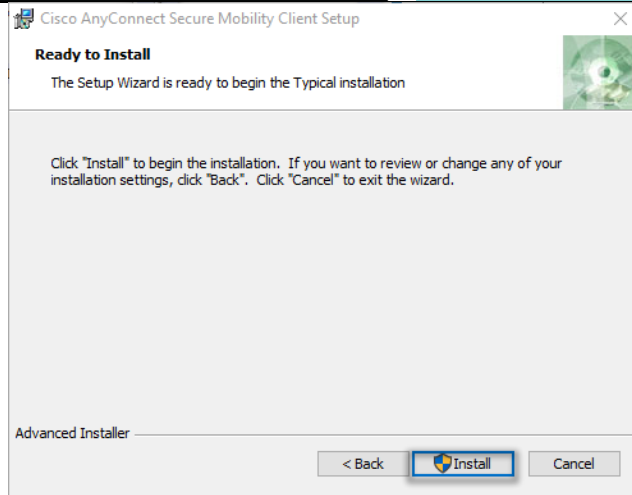
Call: 303-860-4357

Email: help@cu.edu

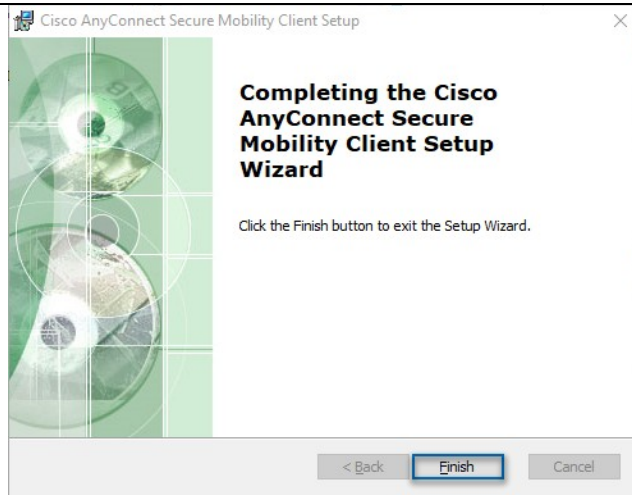
UIS SERVICE DESK

VPN

Select "Install", this will require the username and password you use to login to your personal computer.



After you input those credentials, the installer will install Cisco AnyConnect onto your computer. You will know it has completed when you reach the screen the allows you to click "Finish".



University of Colorado

Boulder | Colorado Springs | Denver | Anschutz Medical Campus

UNIVERSITY INFORMATION SYSTEMS

Contact UIS

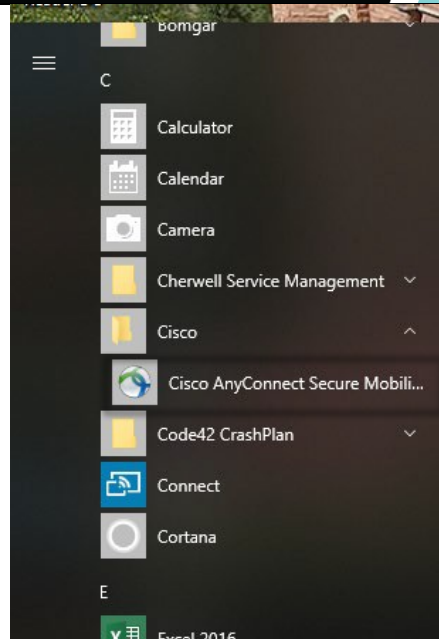
Call: 303-860-4357

Email: help@cu.edu

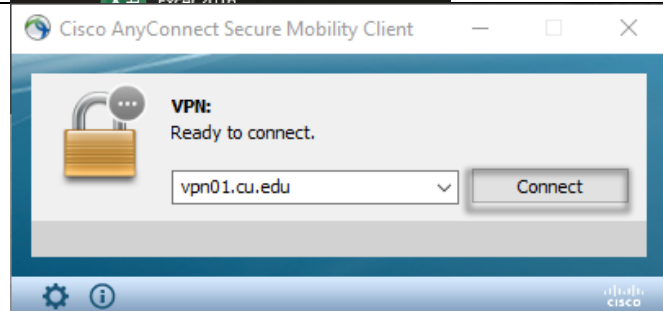
UIS SERVICE DESK

VPN

To find the client after install look under “C” after opening up the Windows Start menu, it may also show in “Recently Installed”.

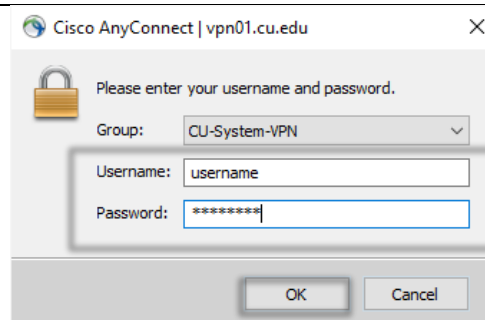


It will then launch in the bottom right-hand corner, and should autofill to say vpn01.cu.edu with a “Connect” button to the right.



There is a backup address should connection to vpn01.cu.edu fail. If you experience issues connecting, please try vpn02.cu.edu. The two VPN concentrators are at different physical locations. Should one location suffer an outage, the other address serves as a backup.

Selecting “Connect” will bring up a login window, input your CU Username and Password once more. CU-System VPN routes all external traffic through your ISP, and routes all CU-System internal network traffic through the VPN.



University of Colorado

Boulder | Colorado Springs | Denver | Anschutz Medical Campus

UNIVERSITY INFORMATION SYSTEMS

Contact UIS

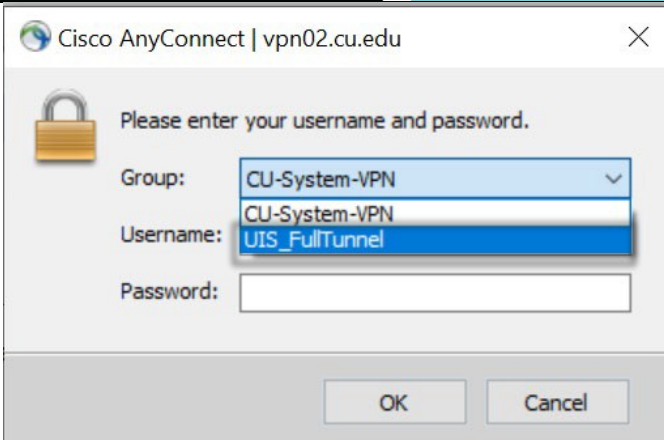
Call: 303-860-4357

Email:help@cu.edu

UIS SERVICE DESK

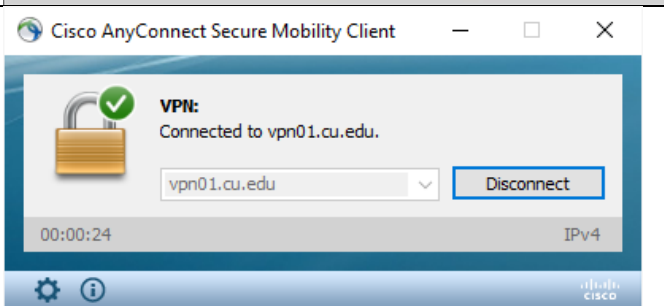
VPN

Certain users may need to access Campus Resources (i.e. Tableau access for UC Denver) and will need to utilize the "Full Tunnel" option for the VPN. This will route all network traffic through the VPN first, before routing to the end destination. To utilize the Full Tunnel option, click the drop down in the 'Group' section and choose "UIS_FullTunnel"



If the login is successful, the Cisco AnyConnect window should have a green checkmark above the lock icon.

You have successfully installed and configured Cisco AnyConnect VPN!



University of Colorado

Boulder | Colorado Springs | Denver | Anschutz Medical Campus

UNIVERSITY INFORMATION SYSTEMS

Contact UIS

Call: 303-860-4357

Email: help@cu.edu