

Content Builder Blocks ^[1]

April 19, 2024 by melanie.jones@cu.edu ^[2]

All Marketing Cloud emails are created by combining different content blocks into a layout. Check out the most commonly used blocks and those to avoid.

Basic & Advanced Blocks

Basic Content

Button

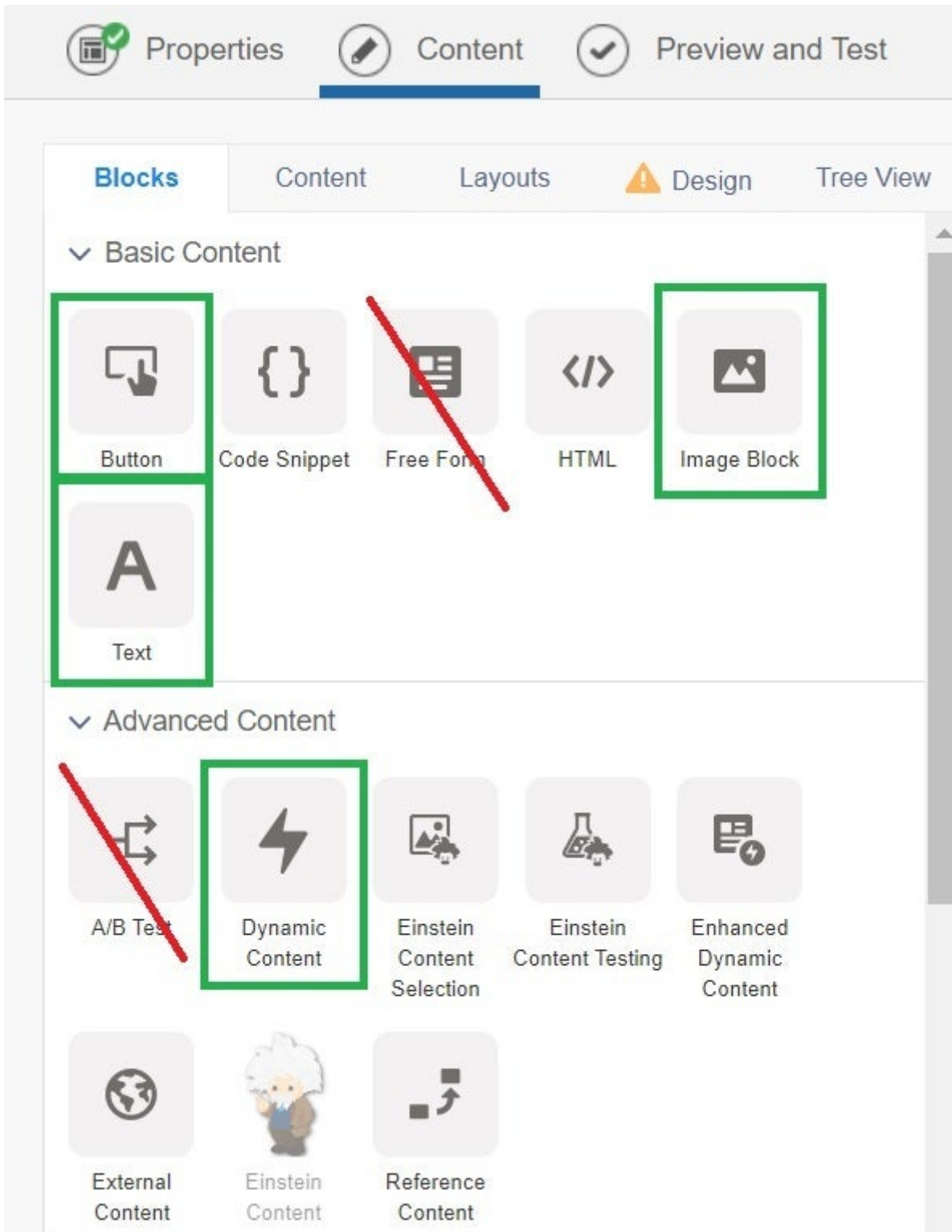
Insert a 'Call to Action' (CTA) button. Avoid using a border on your button (no border or border the same color as the button).

Text Block

Use this for blocks that include only text and links.

Image Block

Use this to insert a JPEG, PNG, or GIF to display an image in this block. While PNG images can be used, it's important to consider how transparent backgrounds are impacted in dark mode (Advanced topic).



TIP!


Background, border, margins, padding and more are available in the **Properties** tab of each block. Borders are best to be avoided as most email clients struggle to render them as


intended (particularly Outlook). You can alter the background color, however.

Content **Block Settings** HTML Editor

Block not saved Text

Block Styling

Background
 none

Border
 none

Border Width

0	0	0	0
---	---	---	---

Spacing

Margin	5		
Padding	10		
10	10	10	10
10	10	10	10
5	5		

Save Block ▲ Done Editing

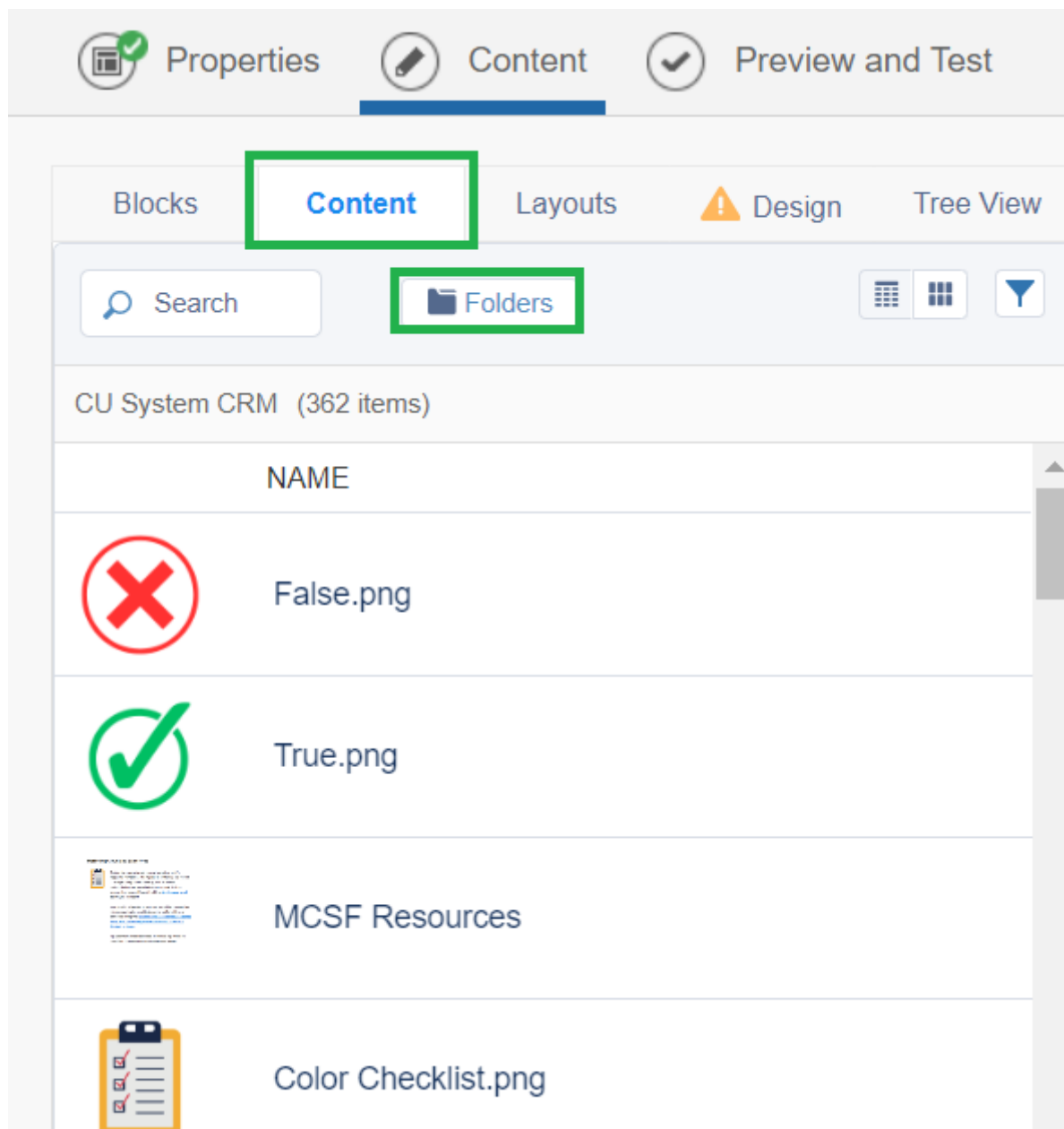
Advanced Block

Dynamic Content

While a valuable content block for getting the most relevant information to the right people efficiently, this topic will not be covered until Advanced training (after learning email basics).

Content

Easily access uploaded or saved assets.



Layouts

Add layouts - combinations of different blocks - to your email by dragging and dropping. You'll find 1, 2, and three columns layout options.



Properties



Content



Preview and Test

Blocks

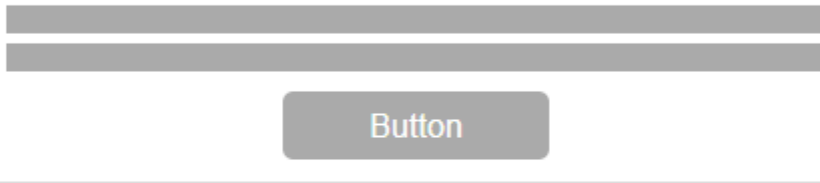
Content

Layouts



Design

Tree View



Text + Button (center-aligned)

Two Columns

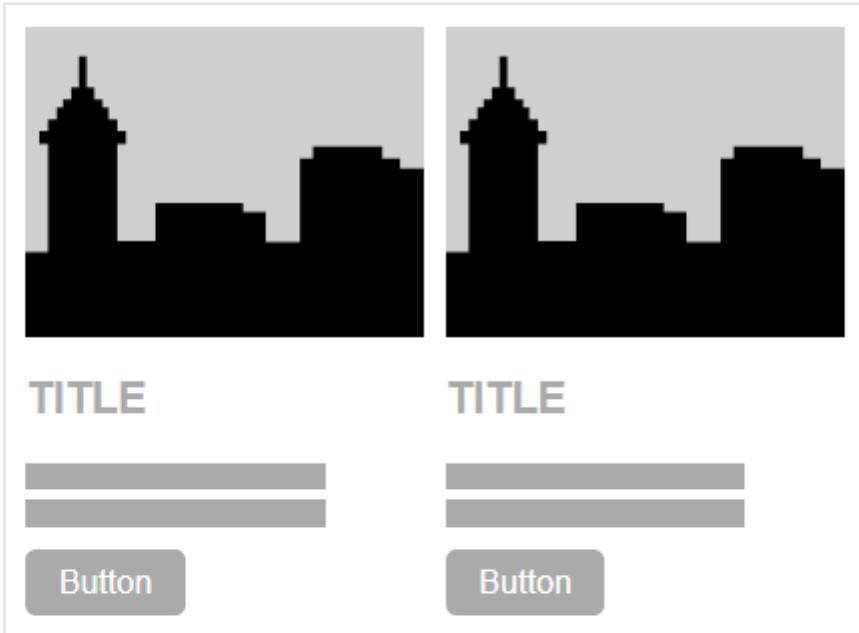
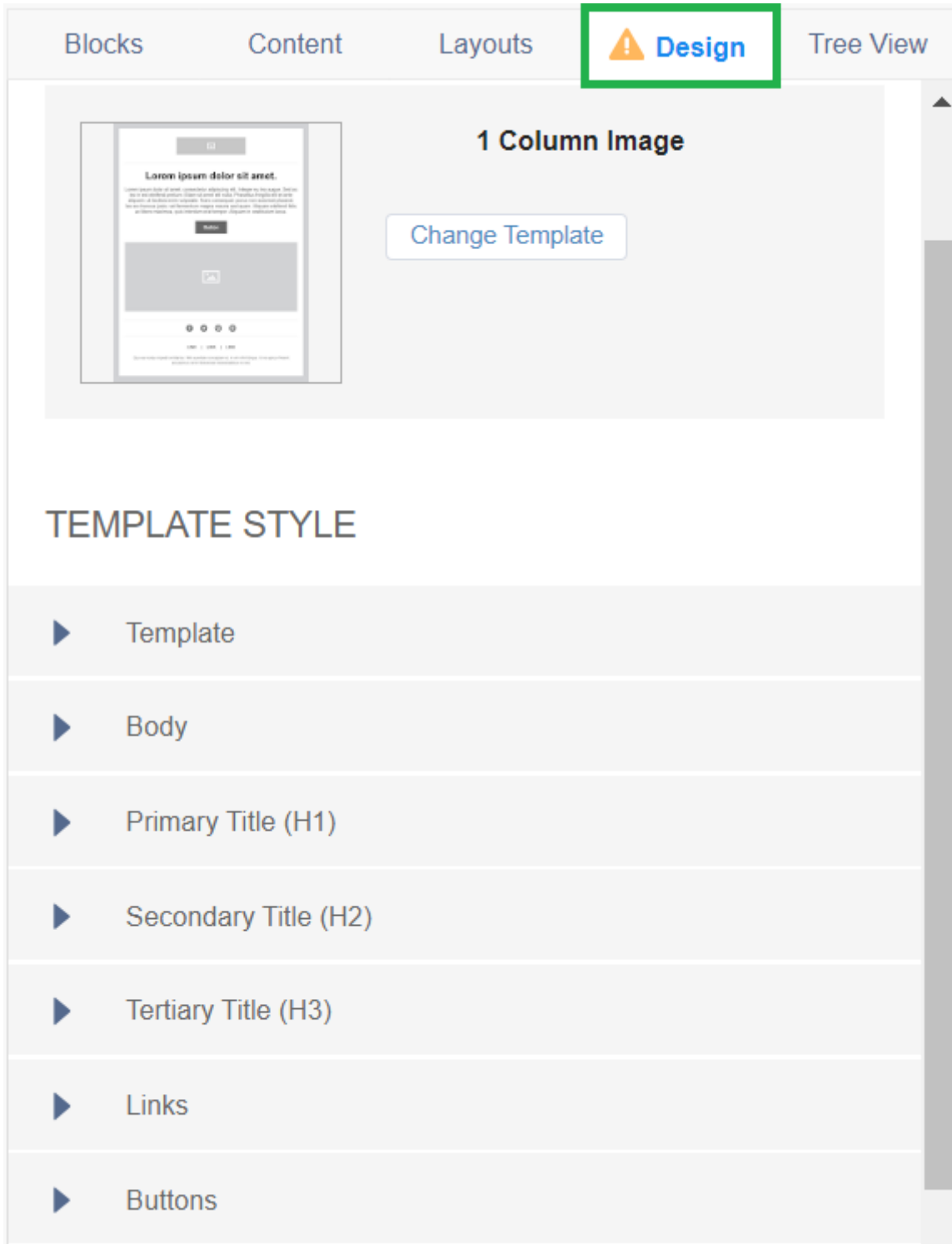


Image + Text + Button (left-aligned)



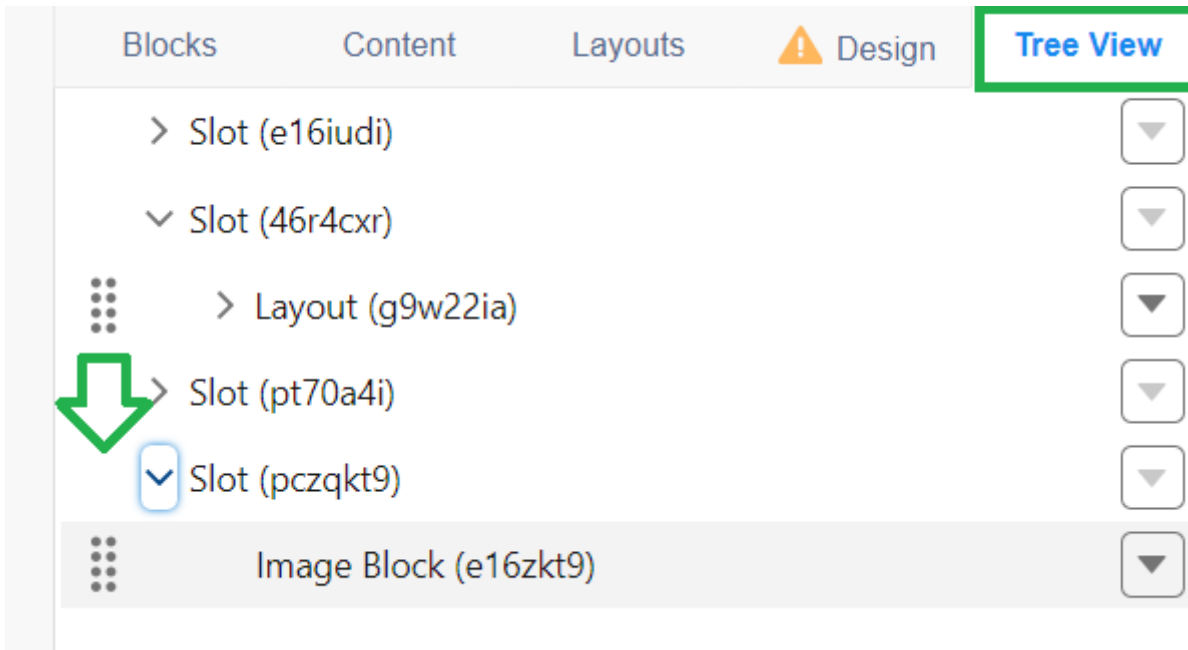
Design / Template

Design your email for consistency and efficiency.



Tree View

The Tree View provides a method to drag-and-drop different layouts and blocks. While possible, it can sometimes be difficult to drag-and-drop content or layouts within a long email on the preview. Oftentimes the block will automatically scroll and move the content the bottom of the email (rather than the middle).



Related Content

- [Marketing Cloud Image Best Practices](#) [3]
- [Consider Accessibility](#) [4]
- [Designing for Mobile in Marketing Cloud](#) [5]
- [Text Block Tips in Marketing Cloud](#) [6]

Display Title:

Content Builder Blocks

Send email when Published:

No

Source URL:<https://www.cu.edu/blog/integrated-online-services/content-builder-blocks>

Links

[1] <https://www.cu.edu/blog/integrated-online-services/content-builder-blocks>

[2] <https://www.cu.edu/blog/integrated-online-services/author/145641> [3] <https://www.cu.edu/blog/ecomm-wiki/marketing-cloud-image-best-practices> [4] <https://www.cu.edu/blog/integrated-online-services/accessibility-best-practices> [5] <https://www.cu.edu/blog/integrated-online-services/designing-mobile-marketing-cloud> [6] <https://www.cu.edu/blog/ecomm-wiki/text-block-tips-marketing-cloud>