

## FIN Journal Entry Spreadsheet Template <sup>[1]</sup>

The Journal Entry Spreadsheet Template is a tool to reduce the manual effort of creating journals?. It's best for multi-line journal entries (more than 10 lines), recurring journal entries, and copying data from other Excel spreadsheets.

### Watch the Mini-Webinar

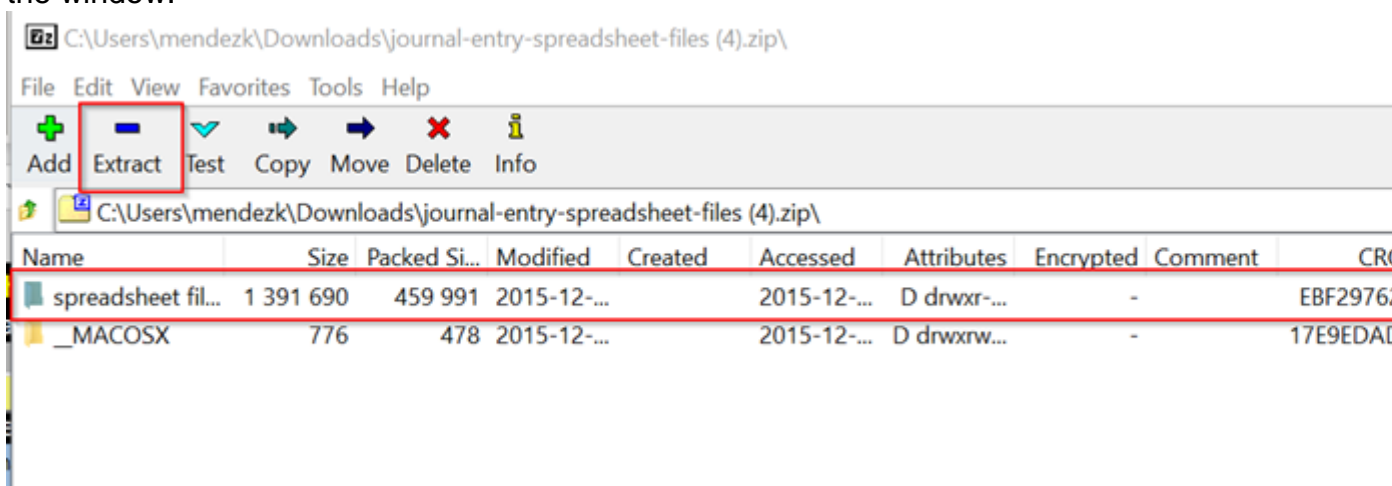
### Read the Procedures

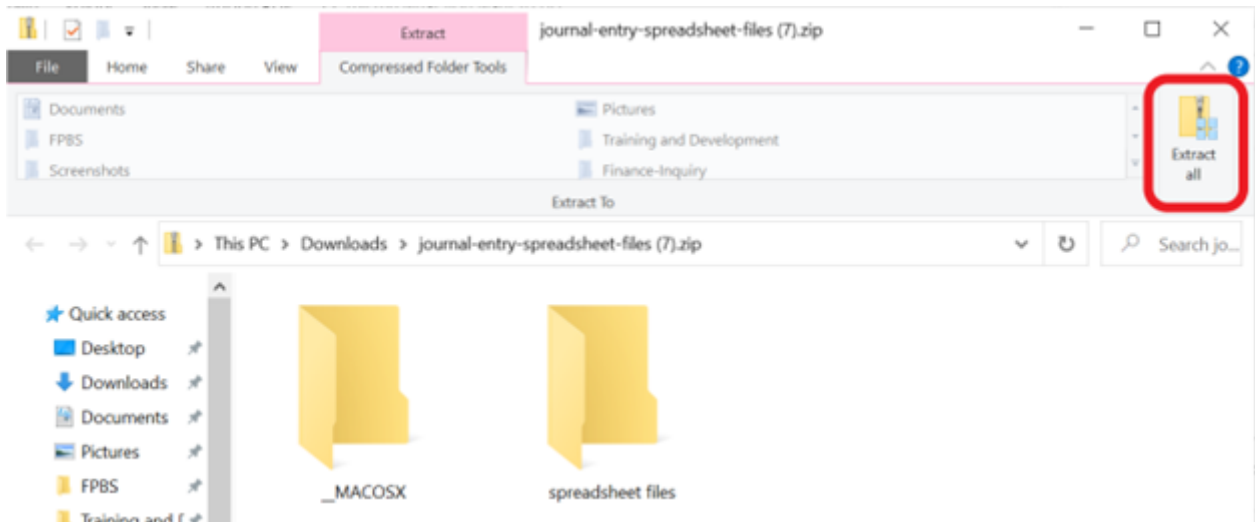
### Downloading the FIN Journal Entry Spreadsheet Template

There are two steps to this process; setting up the spreadsheet template and, if you wish, configuring the spreadsheet template.

#### Setting up the Spreadsheet Template (Required)

1. Click on the **File Attachment** link below to download the spreadsheet files.  
[Journal Entry Spreadsheet Files](#) <sup>[2]</sup>
2. Click on the zip file to open it.?
3. Select the *Spreadsheet files* folder.
4. The window may look different depending on your operating system (see below). Select the Spreadsheet Files folder, then click the **Extract** or **Extract All** button at the top of the window.








5. You'll need to save these files to a folder not backed up by OneDrive or SharePoint (select a folder that does not display a cloud icon next to it). Typically, it is best to save these to a server folder.?

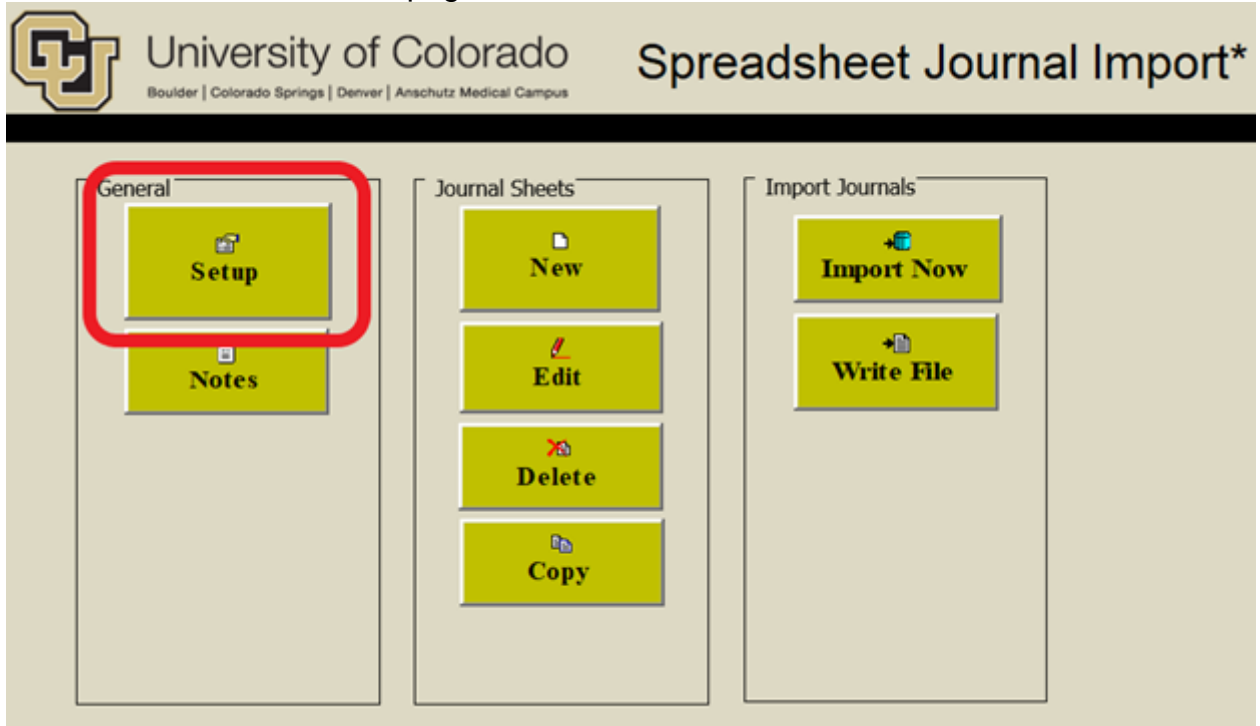
**Important** - You must save all 4 files (JRNLLOG, JRNLMCRO (2), and CU\_FINPRD\_JRNL1.xlsm) to the same folder.

#### Name

-  CU\_FINPRD\_JRNL1.xlsm
-  JrnlLog.xls
-  JRNLMCRO.xla
-  JRNLMCRO.xlam

6. Delete the original zip file from your Downloads folder. You will not use this set of files for your spreadsheet journals.
7. Now, open the journal entry spreadsheet template file from the new location. You may see some Security Warnings when you first open this file.
  - If there is a Security Warning in a yellow bar at the top of the spreadsheet, click **Enable Content**.
  - If a security warning window asks to enable macros, click **Enable this content**, then click **OK**.
8. On the Control worksheet, in the General column, select **Setup**.  
If the Setup button does not respond when you click it, see the Troubleshooting Errors

section at the bottom of this page.



9. In the **Define Options and Defaults** window:
  - Enter your Journal **Source Code**
  - Enter your PeopleSoft **User ID**
  - Update the **After successful import** option to *Change import status to Do Not Import*.
  - The other details, including the business unit, ledger group, and import address,

will default, as shown below.?

Define Options and Defaults

**Header Defaults**

Business Unit: UCOLO

Date:

Ledger Group: ACTUALS

Source: 1

User ID: 2

Enable Multibook

AutoGen Lines

**General Options**

Language: English

**Message Options**

Log Error Message only

Log Successful and Error Message

Display Messages Online

**Document Sequencing**

Enable Document

Default Document Type:

**Online Import Control**

Address: https://fin.prod.cu.edu/

User ID:

3

**After successful import**

Change import status to Do N

Keep import status as Import

Skip if Journal already exists

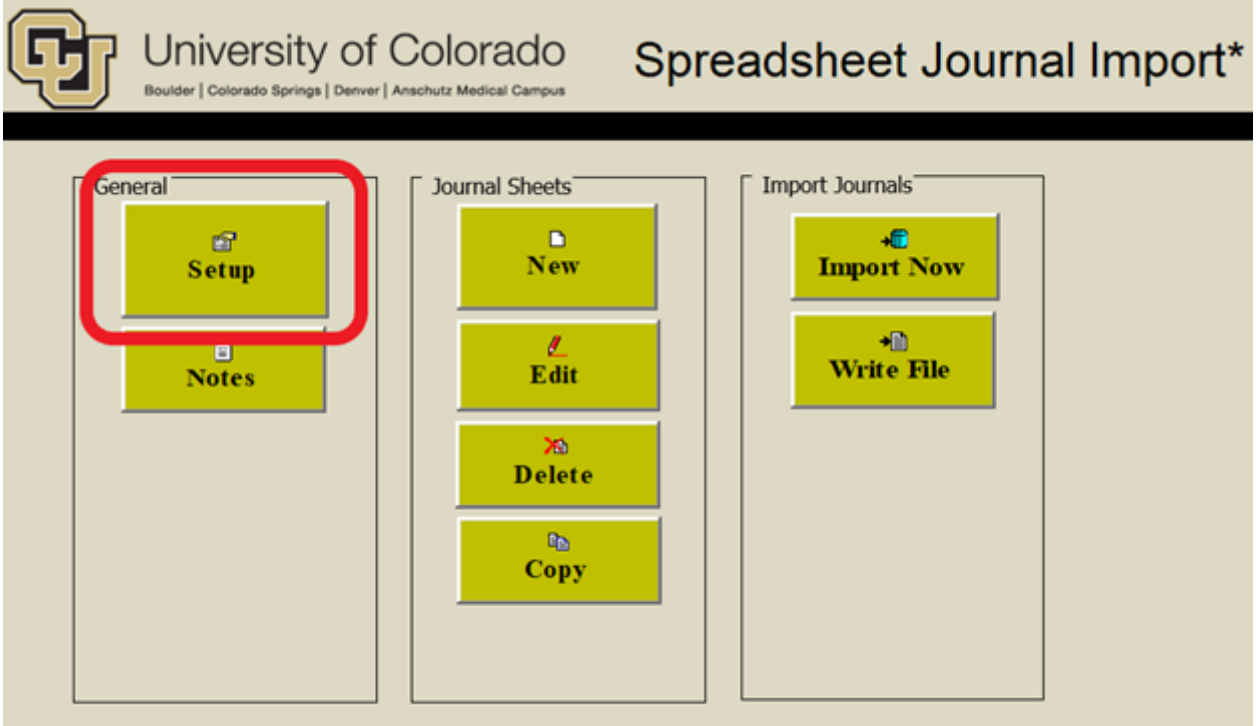
Skip if Journal has error

10. Click **OK** to complete the setup process.

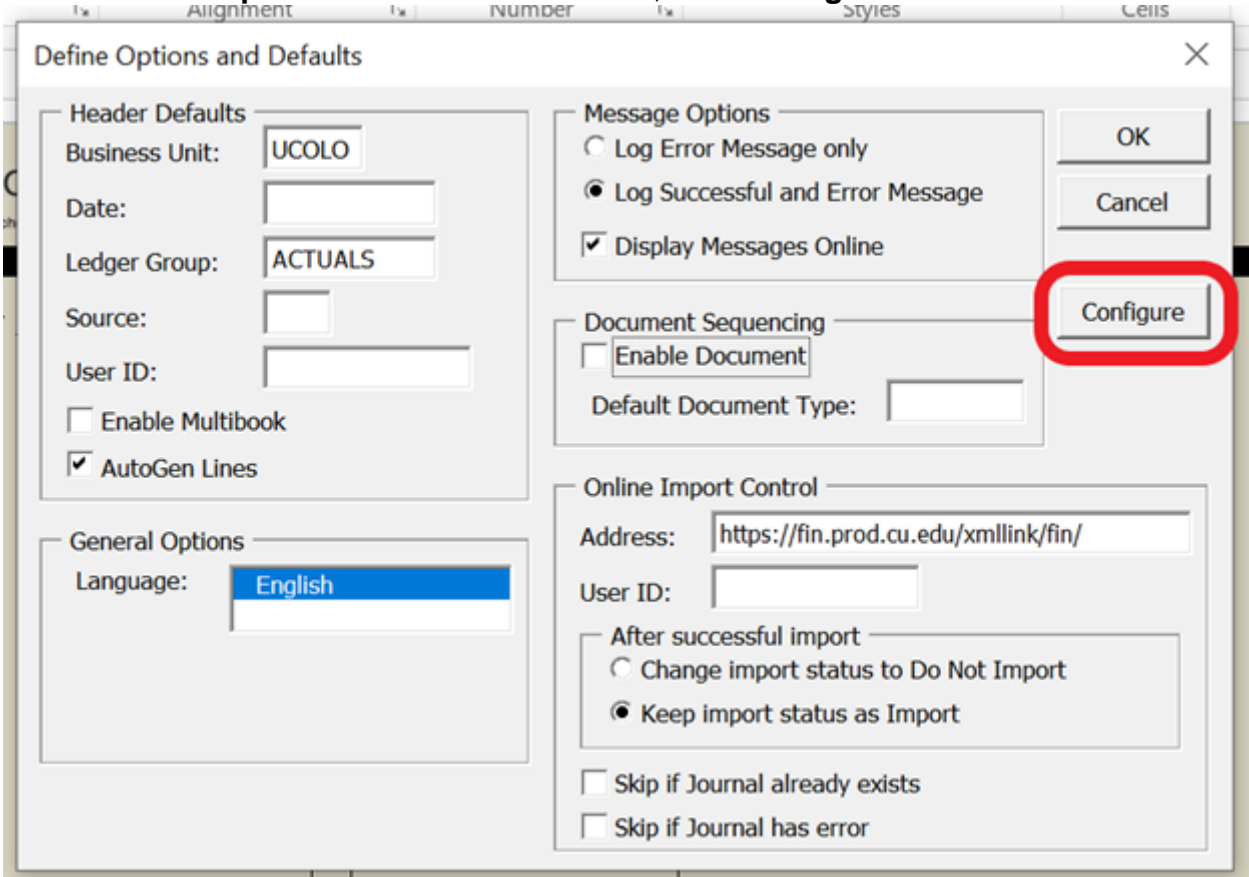
### Configuring the Spreadsheet Template (Optional)

Configuring the spreadsheet template allows you to rearrange the columns on the spreadsheet template. Rearranging the spreadsheet columns will not impact the order of columns in the Finance System.

1. On the Control worksheet, in the General column, select **Setup**

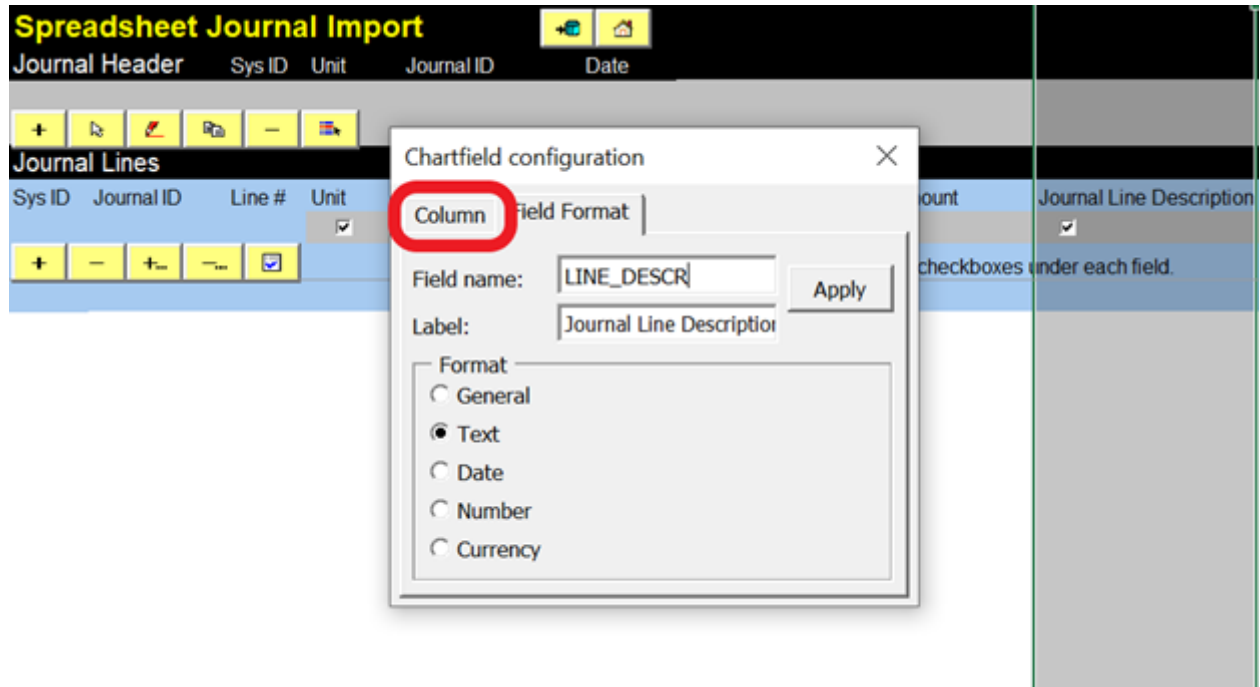


2. On the **Define Options and Defaults** window, click **Configure**.

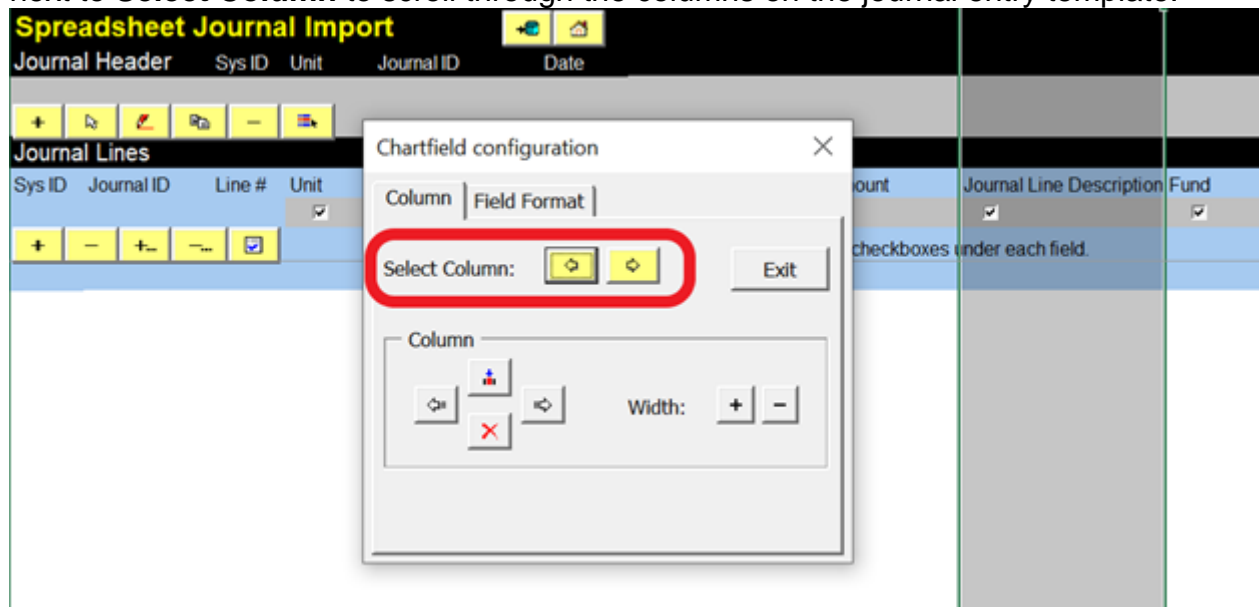


3. The ChartField Configuration window appears.? By default, it opens to the Field Format tab. Select the **Column**

tab.



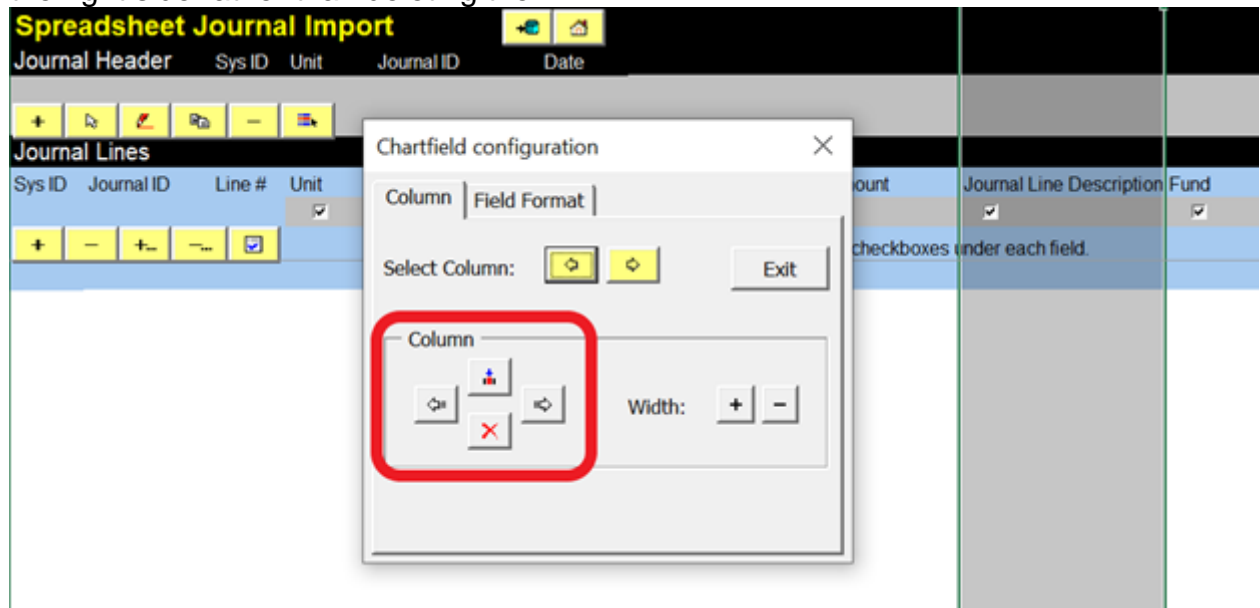
4. Use the Column tab to reorder and delete columns so that you can enter your journal entry data in the order you prefer.  
**To reorder a column:** Select the column you wish to reorder by using the yellow arrows next to **Select Column** to scroll through the columns on the journal entry template.



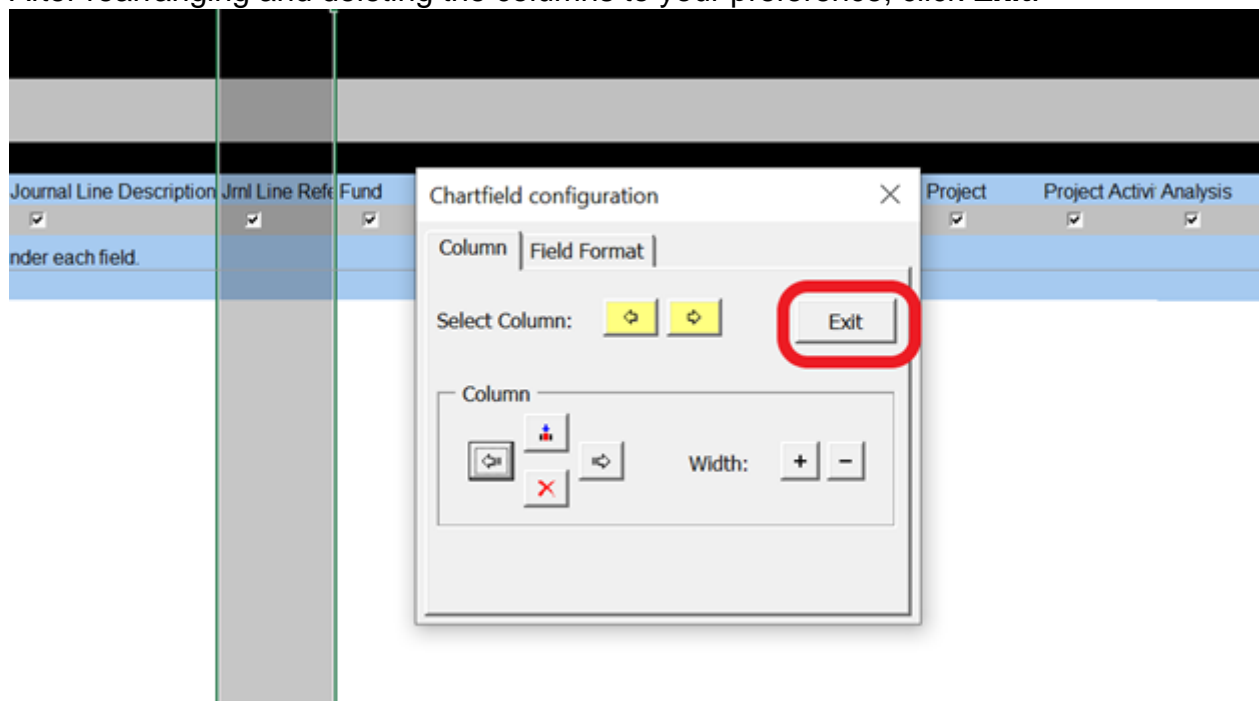
**Note** - Use the column configuration to rearrange your columns. You cannot rearrange columns directly on the spreadsheet using copy/paste functions.

5. Once you have selected the column you wish to reorder, use the arrows below **Column** to move the column to the location/order you prefer.  
The red **X** will delete a column. We recommend moving the columns you do not need to

the right side rather than deleting them.



6. After rearranging and deleting the columns to your preference, click **Exit**.



## Creating Spreadsheet JEs

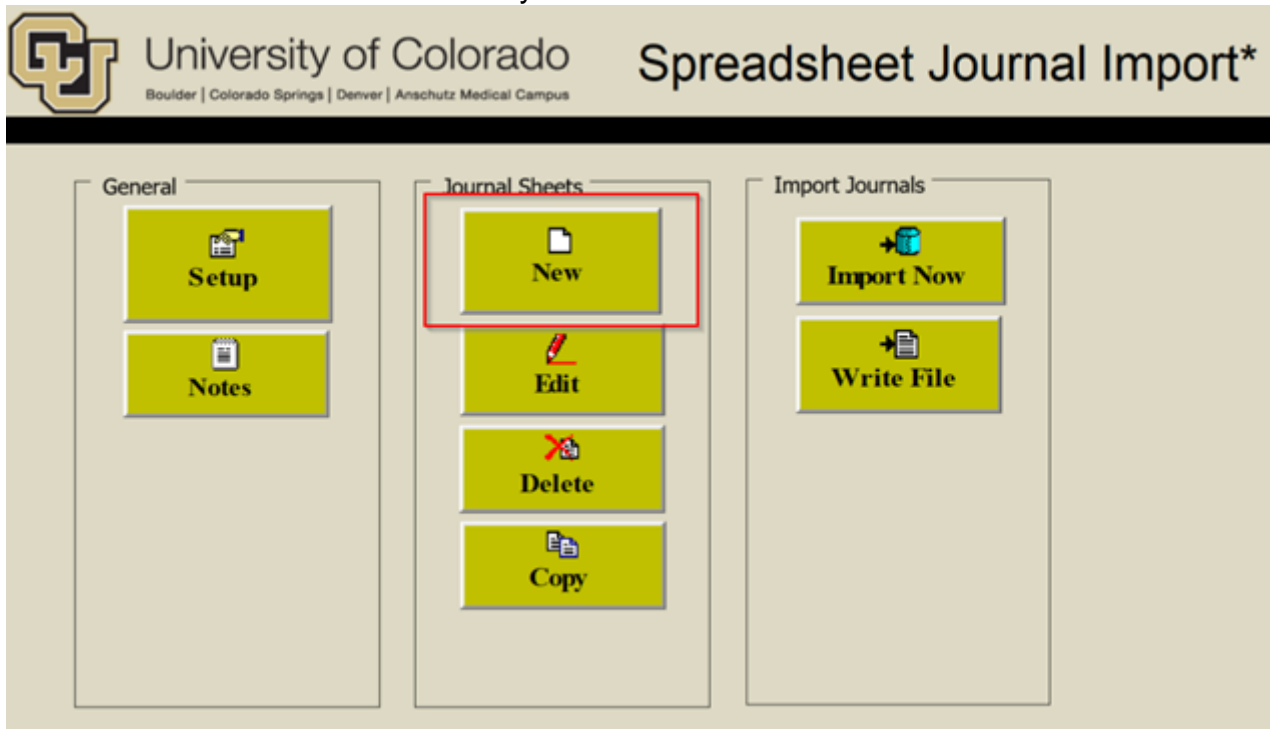
1. Open the journal entry template spreadsheet.?

**Remember!** ?When you set up your Journal Entry Spreadsheet, you downloaded, extracted, and saved all 4 files to a folder on a server folder. So be sure to open the

template file from its new location. Opening it from the original zip file will cause an error.

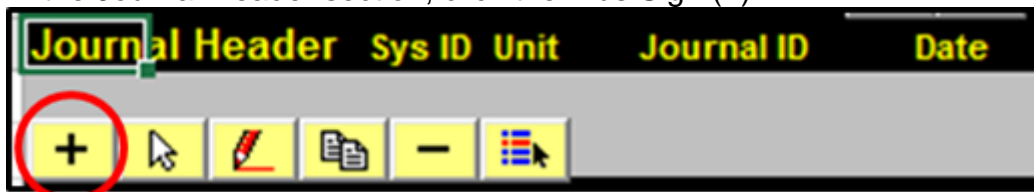


- It will open to the Spreadsheet Journal Import page. Click New in the Journal Sheets column to create a new Journal Entry.



- Enter your Journal Entry Name and click **OK**. This names the worksheet within the journal entry spreadsheet template; this is not your Journal ID.  
**Note:** The name is limited to 29 characters and cannot contain special characters, including **> \* { % & @ / : }**. It can contain spaces.

- In the Journal Header section, click the Plus Sign (+).



- The New Journal Header popup will appear.
  - The **Journal ID** will default to NEXT. If you prefer to name your journal, you can update this field.
  - Enter a **Description**. This description will feed to the Long Description field in FIN.  
**Note** - For tips, see [What Makes a Good Long Description](#) [3].
  - The **Journal Date** will default to the current date. You can update this if necessary.  
**Note:** You may need to make additional selections if entering a journal at year-end.  
If you enter a journal for an Adjusting Period at the end of the year (period 996, 997, or 998), select the **Adjusting Entry** box. Then, enter the appropriate 996, 997,

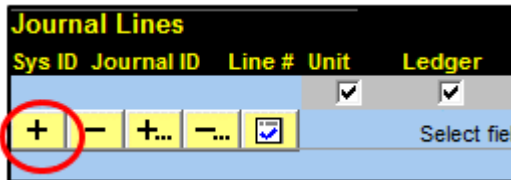


or 998.

If you enter an accrual entry, use the **Reversal** section to select *Beginning of Next Period*.

### Adding the Journal Entry Lines

6. Click the Plus sign (+) in the Journal Lines section to add a journal line.  
Or use the Plus signs with the dots (+...) to add multiple lines at once. A popup box will prompt you to enter the number of lines you want to add.



7. Complete the details for each journal entry line.  
The **Business Unit** (UCOLO), **Ledger**, **SpeedType**, **Account**, and **Amount** are required.?

**For JEs containing project-related SpeedTypes**, also complete the AN Type (required).

The screenshot shows the 'Journal Lines' interface with a table of journal entry lines. The table has columns for 'Sys ID', 'Journal ID', 'Line #', 'Unit', 'Ledger', 'Account', 'CU SpeedType', 'Amount', 'Jrnl Ln Ref', and 'Description'. The first two lines are highlighted in gray. The first line has '1084' in the 'Sys ID' column, 'NEXT' in the 'Journal ID' column, '1' in the 'Line #' column, 'UCOLO' in the 'Unit' column, 'ACTUALS' in the 'Ledger' column, '000100' in the 'Account' column, '51019448' in the 'CU SpeedType' column, '55.00' in the 'Amount' column, and 'Invoice 253A' in the 'Description' column. The second line has '1084' in the 'Sys ID' column, 'NEXT' in the 'Journal ID' column, '2' in the 'Line #' column, 'UCOLO' in the 'Unit' column, 'ACTUALS' in the 'Ledger' column, '000100' in the 'Account' column, '52600076' in the 'CU SpeedType' column, '55.00' in the 'Amount' column, and 'Invoice 253A' in the 'Description' column. The 'Description' column for the second line is highlighted with a green box.

### Here are a few tips -?

- You can only change information in the gray fields. You cannot change the blue areas.
- Make sure the Ledger matches what you selected on the Journal Header.
- As a best practice, we recommend you use SpeedTypes, rather than FOPPS to complete the lines.
- If you're pasting data into the JE Spreadsheet Template from another document, make sure to "Paste Special Values" (Ctrl + Alt + V).

To add another line, click the Plus sign (+) again. The information from the line above will copy to the new line. If you don't want the information to be copied, deselect the checked boxes above the columns you wish not to copy.

### Copying a Journal Entry

Copying a journal is especially helpful when working with recurring JEs. There are two ways to copy journal entry spreadsheet data: copy a journal within an existing sheet or copy a journal to a new sheet.

### Copying a Journal within a Sheet

1. In the Journal Header section, click the **Copy** button.
2. Select the JE you want to copy.?
3. Enter your **Business Unit** (UCOLO), **Journal ID** (NEXT or a custom ID), and **Journal Date**

(formatted as MMDDYY).

4. Click **Copy**.

### Copying a Journal to a New Sheet

1. On the Spreadsheet Journal Import page, click **Copy** in the Journal Sheets column.  
Note: Click Home, if needed, to get to the Spreadsheet Journal Import page.?
2. Select the JE you want to copy. Then, in the **New Journal Sheet** field, enter a new description.
3. Click **Copy**.  
The Journal ID for the new journals will default to NEXT.

### Pasting Data into the Template

Do you plan to copy and paste data from an Excel spreadsheet into the Journal Entry Spreadsheet? We recommend formatting your Excel spreadsheet to match the order of columns in your Journal Entry Spreadsheet.

1. Before you start, you need to know how many lines of data you have.?
2. In a new Journal Entry spreadsheet, click the Add Multiple Lines button (**+...**) and enter the number of lines needed. Adding the appropriate number of lines is critical. You cannot add rows as you traditionally would in Excel.
3. Select the data from your Excel spreadsheet and copy (Ctrl + C).
4. Return to your Journal Entry spreadsheet, and right-click the first available gray field for line 1 of your JE.
5. Select "Paste Special Values" (Ctrl + Alt + V).

### Deleting a line from your journal

Do you need to delete a line from your journal? You'll need to use the buttons in your spreadsheet template.?

1. Select the line you wish to delete. Then click the yellow minus button under Journal Lines.
2. To delete several lines. Select the Delete Multiple Lines button (**-...**). Enter the line numbers you wish to delete. Click **Delete**.

### Importing Spreadsheet JEs to FIN

When you are ready to import your journal entry to FIN:

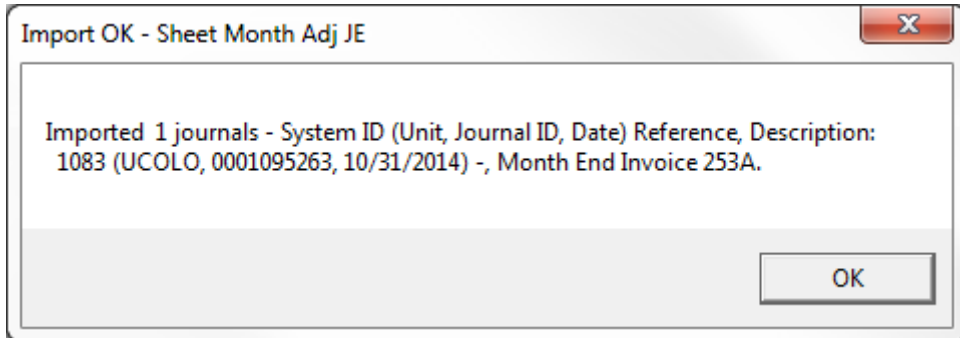
1. Click the Drum/Import Now.



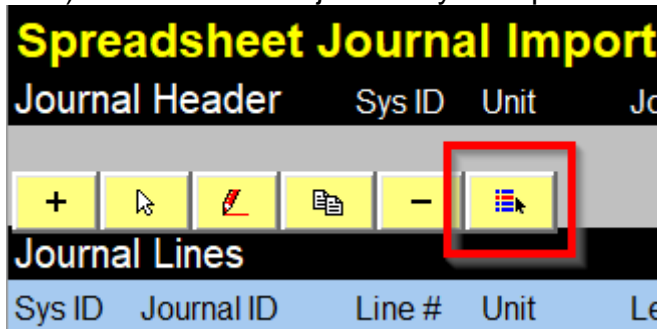
2. Enter your PeopleSoft **User ID** and **Password**, then click **OK**.  
**To find your PeopleSoft User ID** - In the Finance System, click the **Create/Update Journal Entries** tile, and select the **Find an Existing Value** tab. Your ID will show in the **Entered by** field.?  
If you can't remember your password, see the [Troubleshooting Errors](#) section at the

bottom of this page for instructions to reset it.

- The Finance System will load your journal entry and display a message with the journal status. Review this message to confirm the journal imported and note the JE ID. Click **OK**.



- Your Journal Log will appear with a success message that includes the JE ID. You'll need this JE ID to look up and complete your journal entry in the Finance System.
- If your import failed, see the [Troubleshooting Errors](#) section at the bottom of this page. **Note** - Each time you click the import button, it will try to upload everything in the sheet. If you have multiple journals, you can click the **Import Status** icon (to the right of the – icon) to control which journals you import.



?

- Select the files you do not want to import, select the **Do not import** option, and click **OK**??
- Then, click the **Import Status** icon, select the file you wish to import, select Import, and click **OK**?

## Completing Spreadsheet JE Uploads

To complete the journal entry, you'll need to log into the Finance System, [add attachments](#) [4], [edit](#) [5], and [submit](#) [6] the journal.

**To find your journal entry:**

1. Log into the Finance System.
2. From the **Finance & Accounting** homepage, click on the **Create/Update Journal Entries** tile.
3. Select the *Find an Existing Value* tab.
4. Enter your **JE ID**.
5. Click **Search**.

**To add attachments:** See [Adding Attachments](#) [4]

**To edit the journal entry:** See [Editing Journal Entries](#) [5]

**To submit the journal entry:** See [Submitting Journal Entries](#) [6]

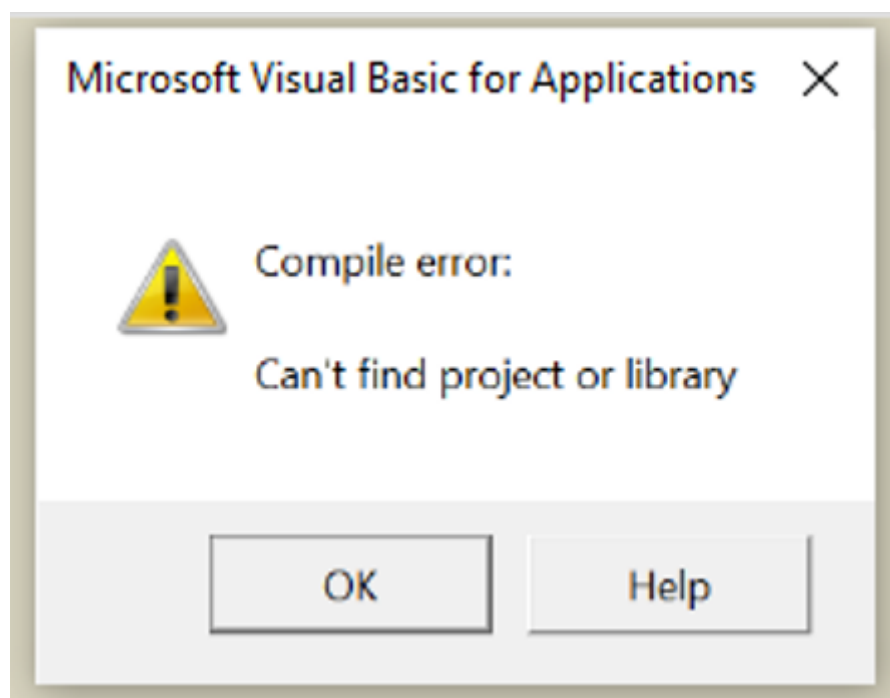
Need help troubleshooting an error or navigating the Spreadsheet Template?

## Troubleshooting Errors

Here are some of the most common Journal Spreadsheet errors and how to fix them.

### **Error #1: "Visual Basic" Error**

You open the spreadsheet template, and the Microsoft Visual Basic error message appears:

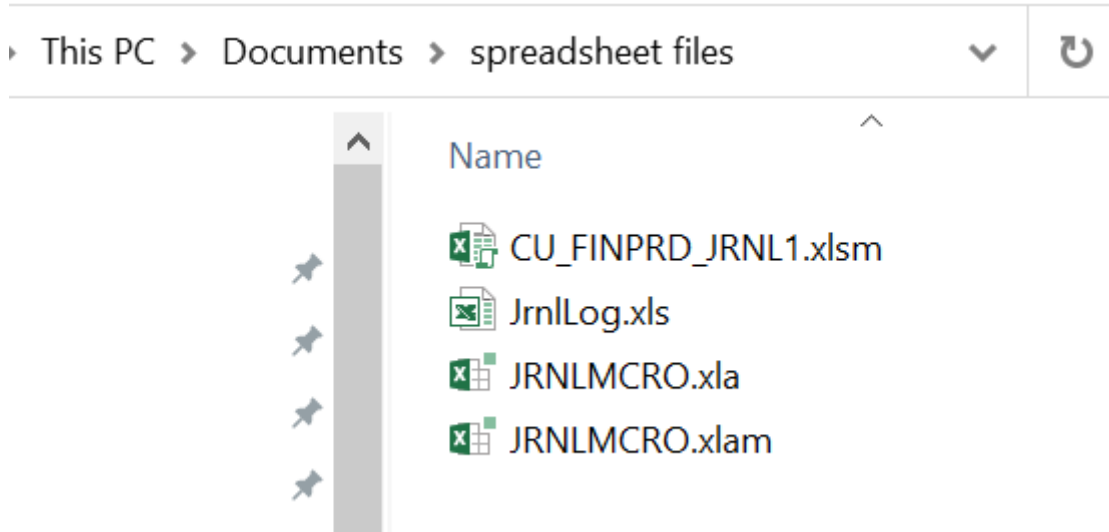


**Most Likely Cause:** You opened the file directly from the zip file you downloaded from the website.?

**Solution:** Instead, extract the files and save them to a local folder. Follow the steps for Setting Up the Spreadsheet Template on [Setting Up and Configuring Journal Entry Spreadsheet](#) [7].

**Other Possible Cause:** You extracted the files but didn't save all 4 files together.

**Solution:** Make sure you save all 4 files to the same folder.? Be sure to save the files in a folder not backed up by OneDrive or SharePoint. A file backed up by OneDrive will have a cloud icon next to it.



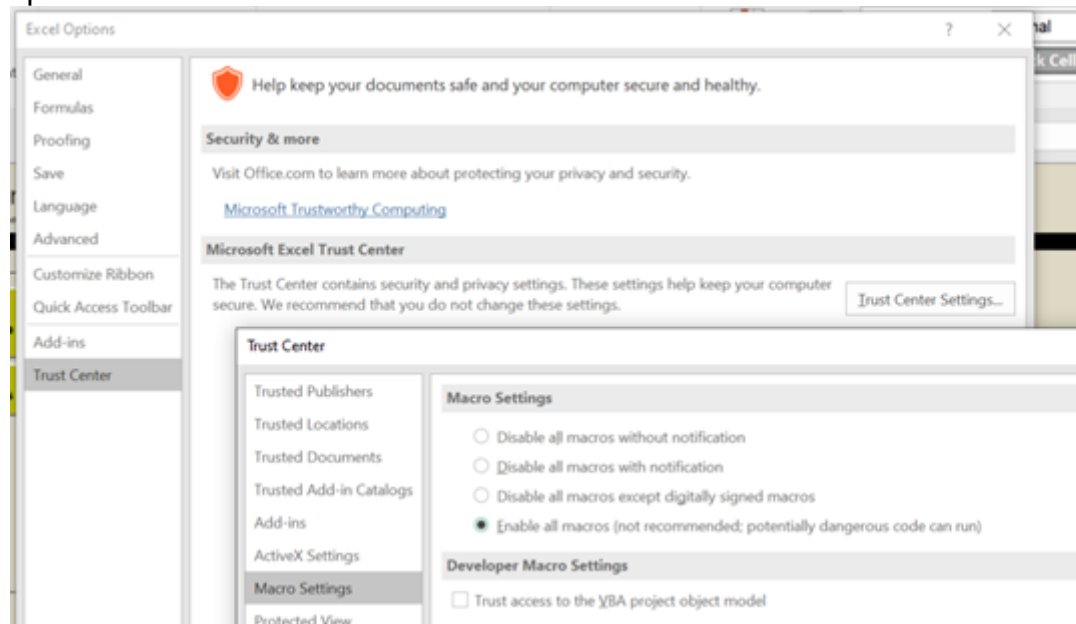
**Error #2: The buttons do not respond**

You click the Setup button, and nothing happens.?

**Cause:** Macros are disabled.

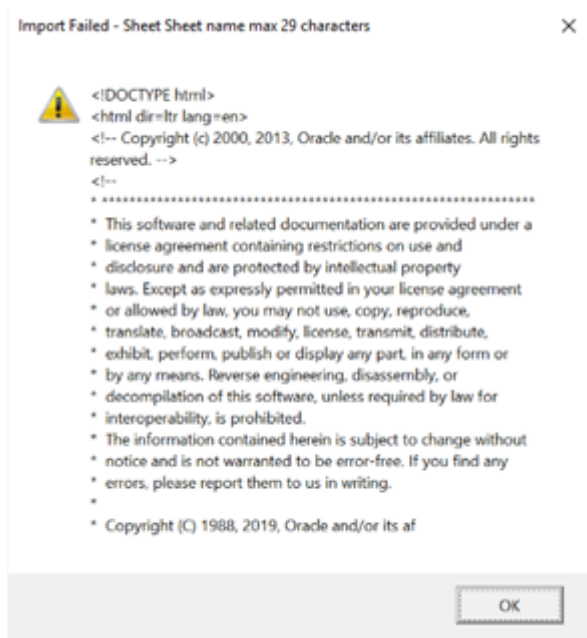
**Solution:** Enable macros.

1. Click **File > Options** to open your Excel Options.?
2. Select **Trust Center**.?
3. Click **Trust Center Settings**.?
4. Select **Macro Settings**.?
5. Change the setting to *Enable all macros*.?
6. Click **OK** to save your settings, then close and reopen the spreadsheet.



### Error #3: "Import Failed" Message

You click the drum button to import the journal and receive an "Import Failed" message.?



**Most Likely Cause:** An expired password. Passwords expire after 6 months.

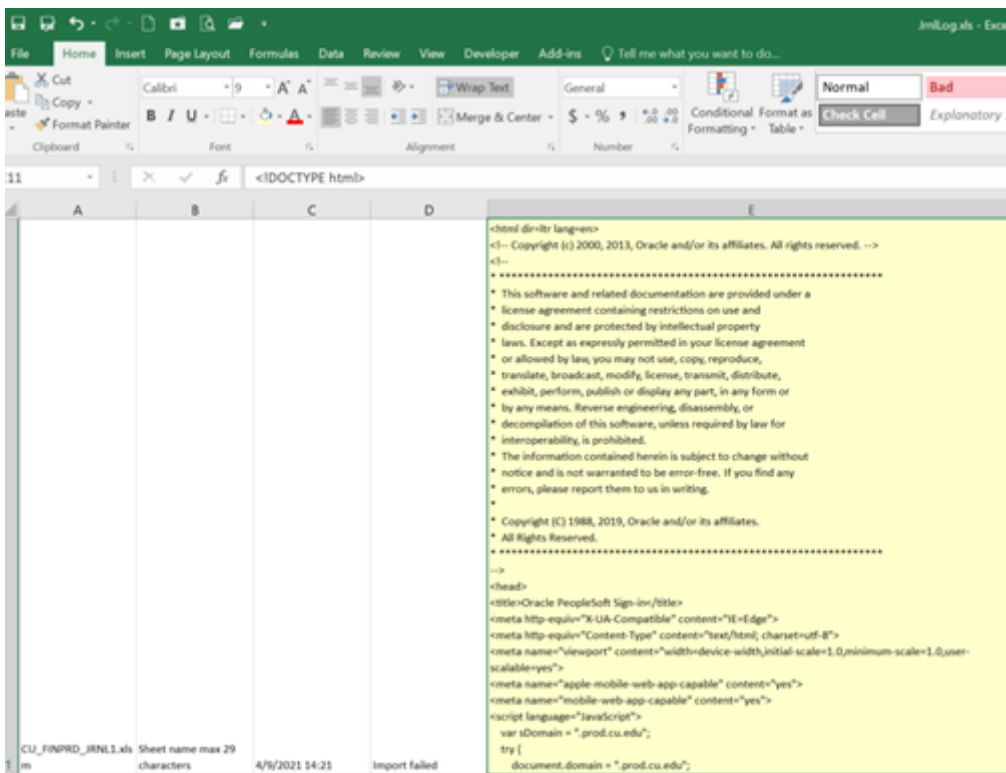
**Solution:** Confirm this is the cause by reviewing the Spreadsheet JnlLog.?

- Review the error description. To make this easier to read, select all the Log Message text (click in the cell, then click Ctrl +A), copy (Ctrl +C), and paste it into a Word document.?

- Scroll through the message (or Ctrl + F) for "Your User ID and/or Password are invalid."?
- Confirm you are using your OUD User ID, which should be 4 alpha and 6 digit characters.?
- To find your PeopleSoft User ID - In the Finance System, click the Create/Update Journal Entries tile, and select the Find an Existing Value tab. Your ID will show in the Entered by field.?
- If you used the correct User ID, proceed to reset your password.?

### To reset your OUD password:?

1. Click this [link](#) [8] and select your campus.
2. Click the **My Access** tile.?
3. Select the **Accounts** tab.?
4. On the accounts tab, click the line for OUDPRD. It will highlight in blue.  
**Note:** If you don't see OUDPRD as an option, contact [access@cu.edu](mailto:access@cu.edu) [9] for assistance.
5. Click the **Actions** dropdown at the top of the table.?
6. Select **Reset Password**.
7. Set your new password, then click **Submit**.? Your password must contain:
  - At least one capital letter;
  - At least one numeral;
  - At least one special character;
  - At least 12 characters in length; and
  - Cannot be one of your previous passwords.
8. It may spin for a moment before returning to the My Access page.



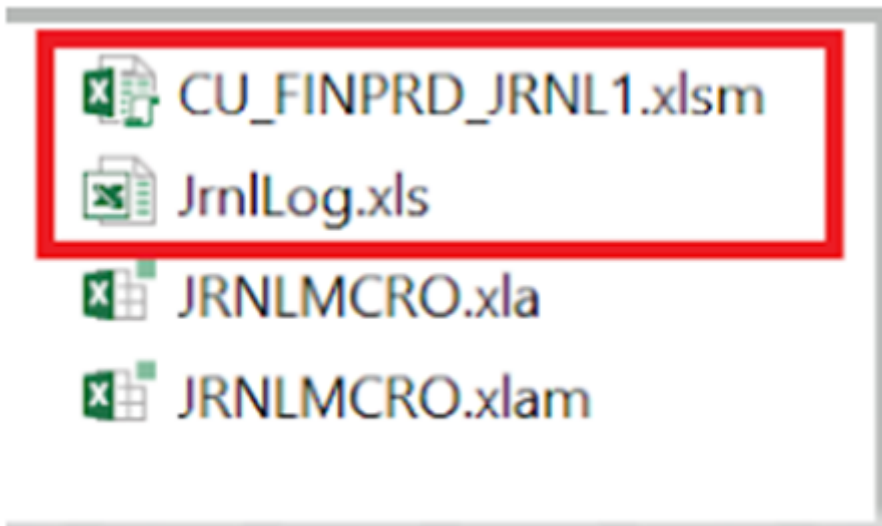
?

**Other Possible Cause:** A data issue within your journal entry

**Solution:** Review your spreadsheet journal and delete special characters like `> *{ % & @ / : }`.

### Do you still have an error?

If you encounter other errors, let us know. The best way to help us troubleshoot is to email [FSS Help](mailto:FSS@cu.edu) <sup>[10]</sup> ([FSS@cu.edu](mailto:FSS@cu.edu) <sup>[11]</sup>) a screenshot of the error message, a copy of your Journal Log, and a copy of your Journal Spreadsheet.



## Navigating the FIN Journal Entry Spreadsheet Template

When you open the Journal Entry Spreadsheet file, it will open to the Spreadsheet Journal Import page. You've learned how to use the **New** button to create new journal entries.

The **Journal Sheets** column also includes these options:

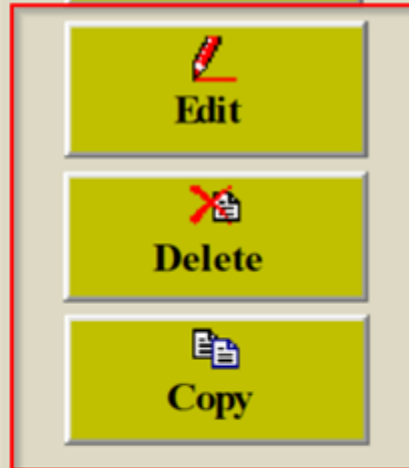




## General



## Journal Sheets



## Import Journals



- **Edit** – Click the Edit button to make changes to an existing journal sheet.
- **Delete** – Click the Delete button to select and delete journal sheets you previously saved in the template.
- **Copy** – Click the Copy button to copy a previously saved journal sheet into a new one.

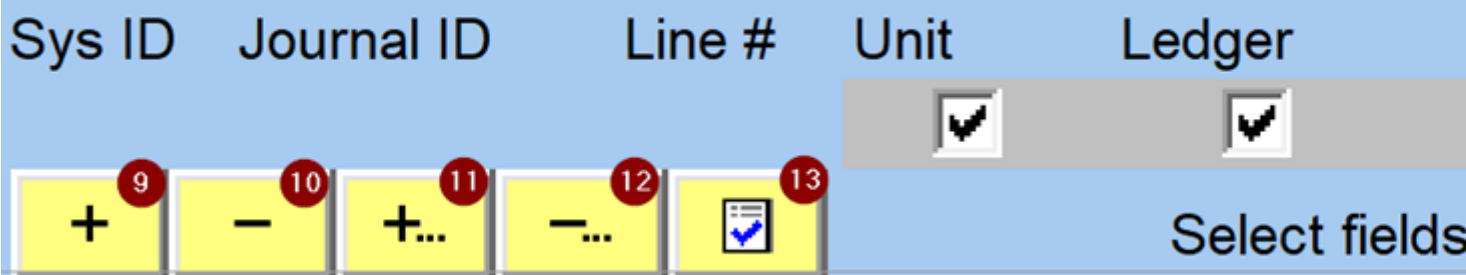
**The Spreadsheet Journal Import buttons may be used as follows:**

# Spreadsheet Journal Import

Journal Header      Sys ID      Unit      Journal ID



## Journal Lines



1. Imports the journal sheet to the Finance System.
2. Returns to the Spreadsheet Journal Import page.
3. Creates a new journal header.
4. Selects the journal header on whose lines you want to work.
5. Edits the journal header fields.
6. Copies a journal.
7. Deletes a journal.
8. Changes import status of a journal.
9. Adds a journal line in the current selected journal header.
10. Deletes a journal line. Position your cursor on the line and click this button.
11. Add multiple lines.
12. Deletes multiple lines.
13. Checks the amount fields to verify that you have entered the number with the number of decimal points that you have set up. The default number of decimal points is 2.

**Have a question or feedback?**

## Questions & Feedback <sup>[12]</sup>

**Feedback or Question \***

**Your Name**

---

**Your Email Address**

CAPTCHA

This question is for testing whether or not you are a human visitor and to prevent automated spam submissions.

Submit

**Groups audience:**

Controller

---

**Source URL:**<https://www.cu.edu/controller/training/finance-system-training/finance-system-learning-resources-journals/fin-journal>

**Links**

[1] <https://www.cu.edu/controller/training/finance-system-training/finance-system-learning-resources-journals/fin-journal>

[2] <https://www.cu.edu/files/journal-entry-spreadsheet-fileszip?download=true>

[3] <https://www.cu.edu/controller/training/finance-system-training/finance-system-learning-resources-journals/fin-how-what>

[4] <https://www.cu.edu/controller/fin-how-adding-attachments>

[5] <https://www.cu.edu/controller/fin-how-editing-journal-entries-and-correcting-errors>

[6] <https://www.cu.edu/controller/fin-how-submitting-journal-entries>

[7] <https://www.cu.edu/controller/fin-how-setting-and-configuring-journal-entry-spreadsheet>

[8]

[https://identity.prod.cu.edu/identity/faces/home?\\_afLoop=1097395569020997&\\_afWindowMode=0&\\_adfstate=li9gyn259\\_4](https://identity.prod.cu.edu/identity/faces/home?_afLoop=1097395569020997&_afWindowMode=0&_adfstate=li9gyn259_4)

[9] <mailto:access@cu.edu>

[10] <mailto:fss@cu.edu>

[11] <mailto:FSS@cu.edu>

[12] <https://www.cu.edu/controller/forms/questions-feedback-0>