

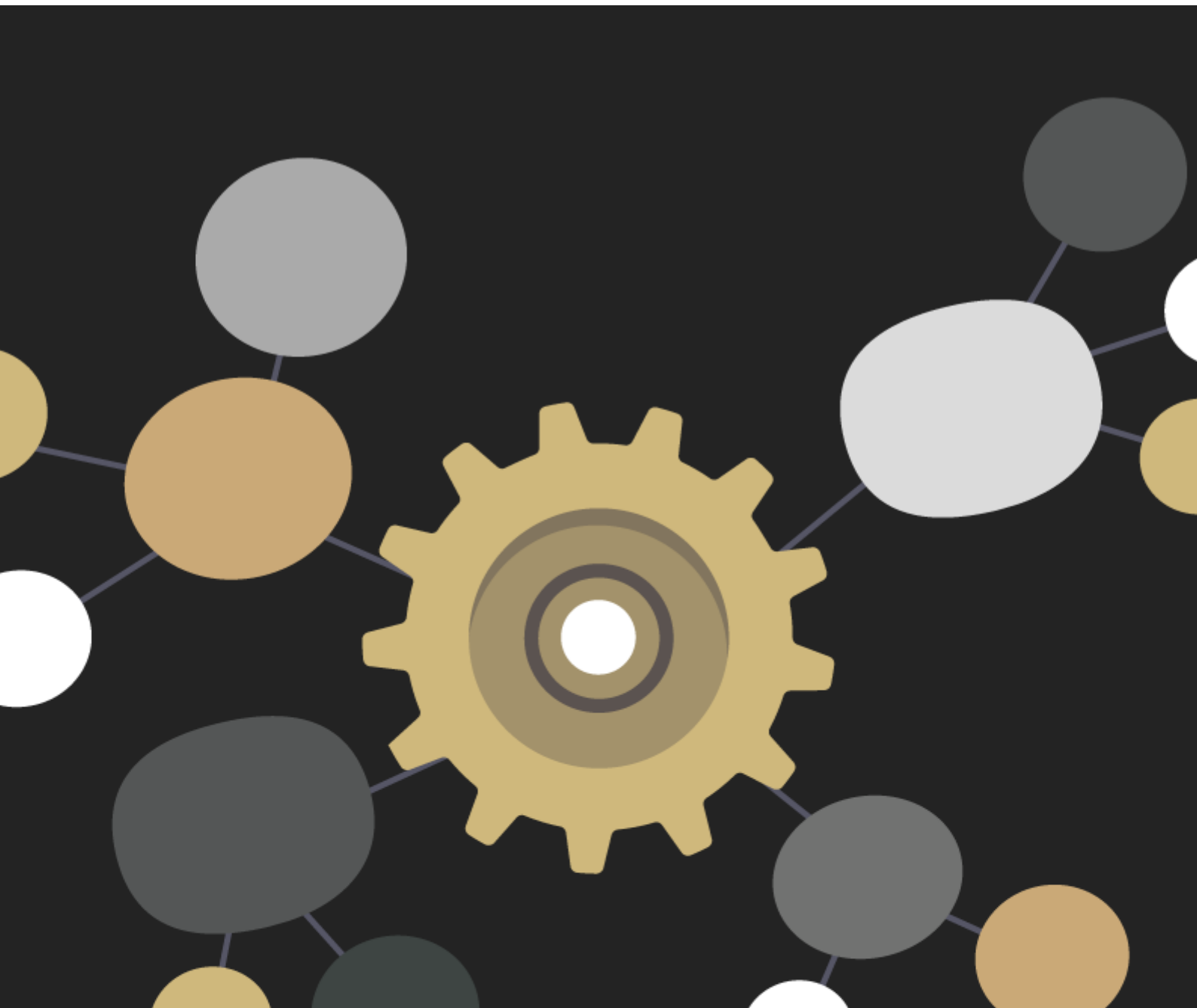
## **Resources & Support** <sup>[1]</sup>

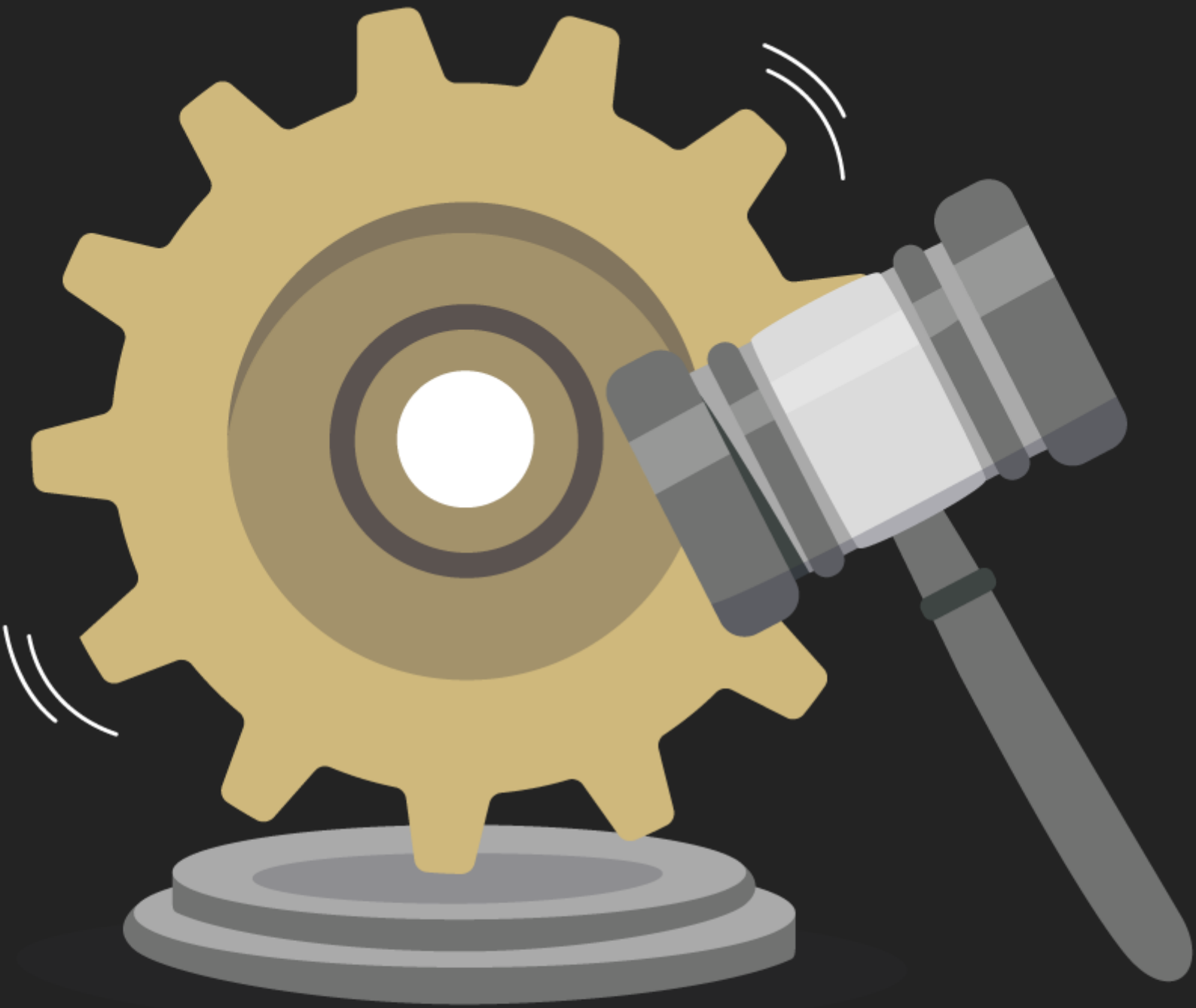
### **Every day, thousands of gigabytes of data pass through the CU Servers.**

To ensure that data is managed as a sensitive asset, the University of Colorado has established a data governance program with the goals of ensuring that data provides value, meets compliance requirements, and risks are managed proactively.

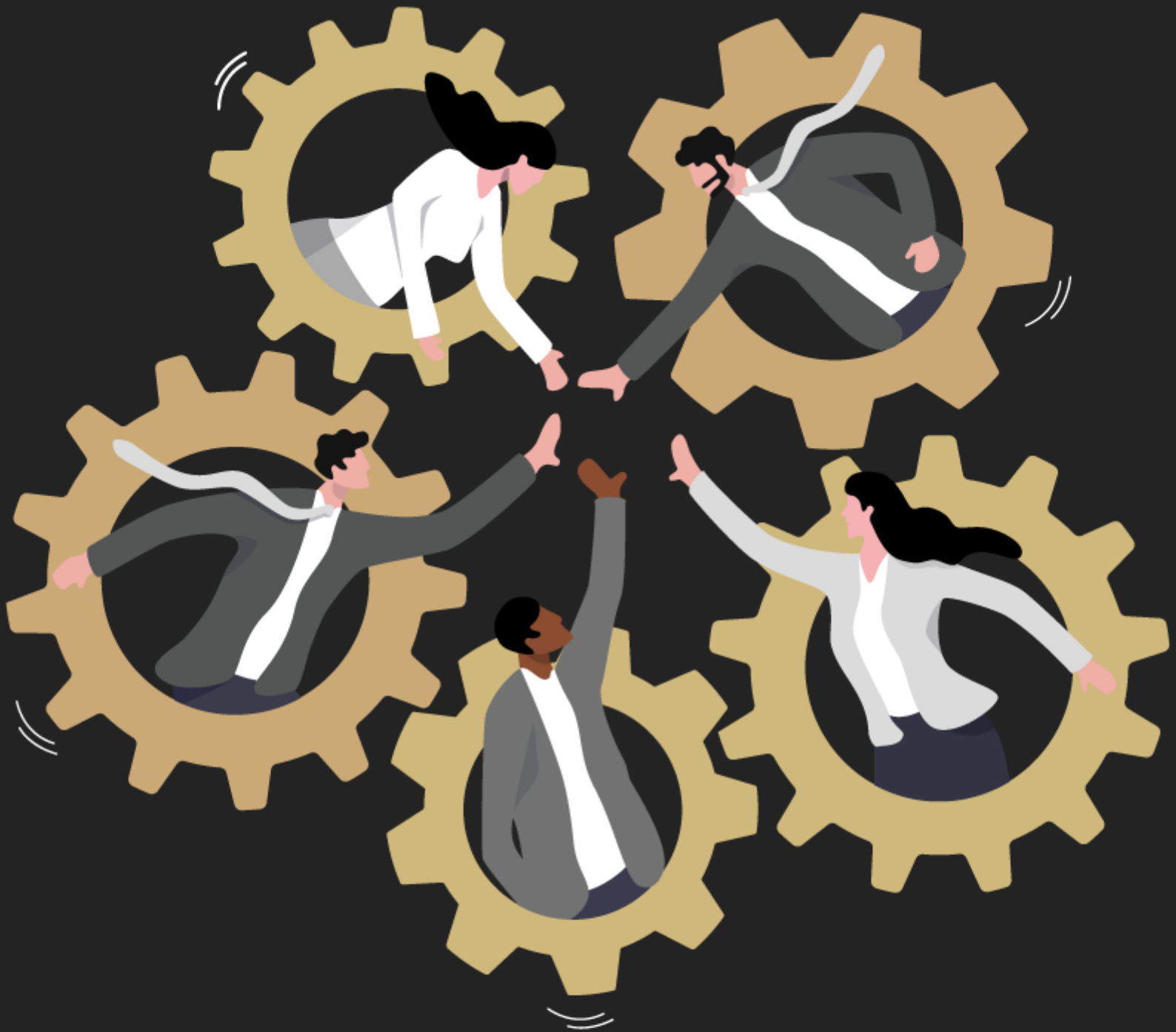
If you have a specific request, please email the **Data Governance group**. <sup>[2]</sup>

**Below, find resources on topics crucial to cohesive and secure data management.**

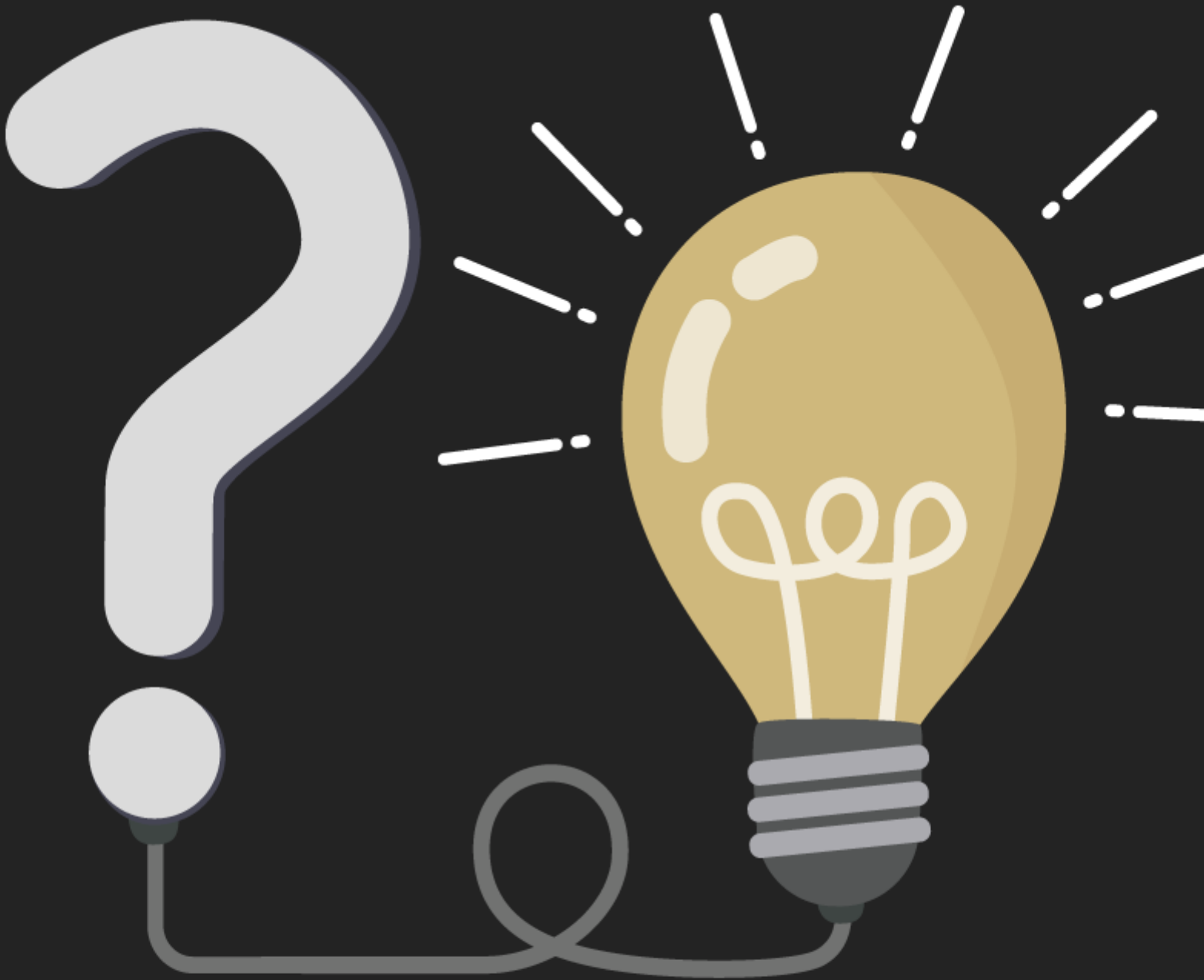




# DATA POLICIES & GUIDELINES



# DATA ROLES & RESPONSIBILITIES



# **SOLUTIONS & SUPPORT**

## Secure user access

UIS provides reliable and secure access to systemwide software platforms crucial to employee work. Please visit the [Access and IT Security web page](#) [7] to find resources for onboarding, identity and password management, access coordinators and for employees to request access.

[Request access](#) [7]

For access information specific to Collibra, visit the [Collibra Access web page](#) [8].

### Groups audience:

Data Governance

---

**Source URL:**<https://www.cu.edu/data-governance/resources-support>

### Links

[1] <https://www.cu.edu/data-governance/resources-support> [2] <mailto:data.governance@cu.edu>  
[3] <https://www.cu.edu/data-governance/resources-support/data-classification> [4] <https://www.cu.edu/data-governance/resources-support/data-policies-guidelines> [5] <https://www.cu.edu/data-governance/data-groups-and-roles> [6] <https://www.cu.edu/data-governance/resources-support/cu-data-solutions-support>  
[7] <https://www.cu.edu/uis/access-and-it-security> [8] <https://www.cu.edu/data-governance/collibra-data-catalog/access>