

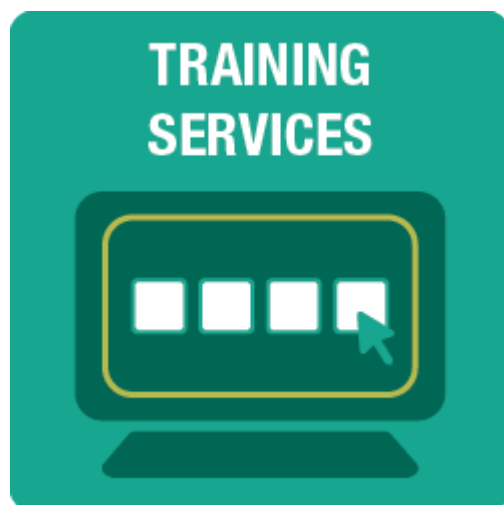
Professional Growth & Training ^[1]

Professional Growth & Training

Faculty and staff are encouraged to take advantage of services and resources to further their growth and professional development. Some of these resources are also available to students and POIs.

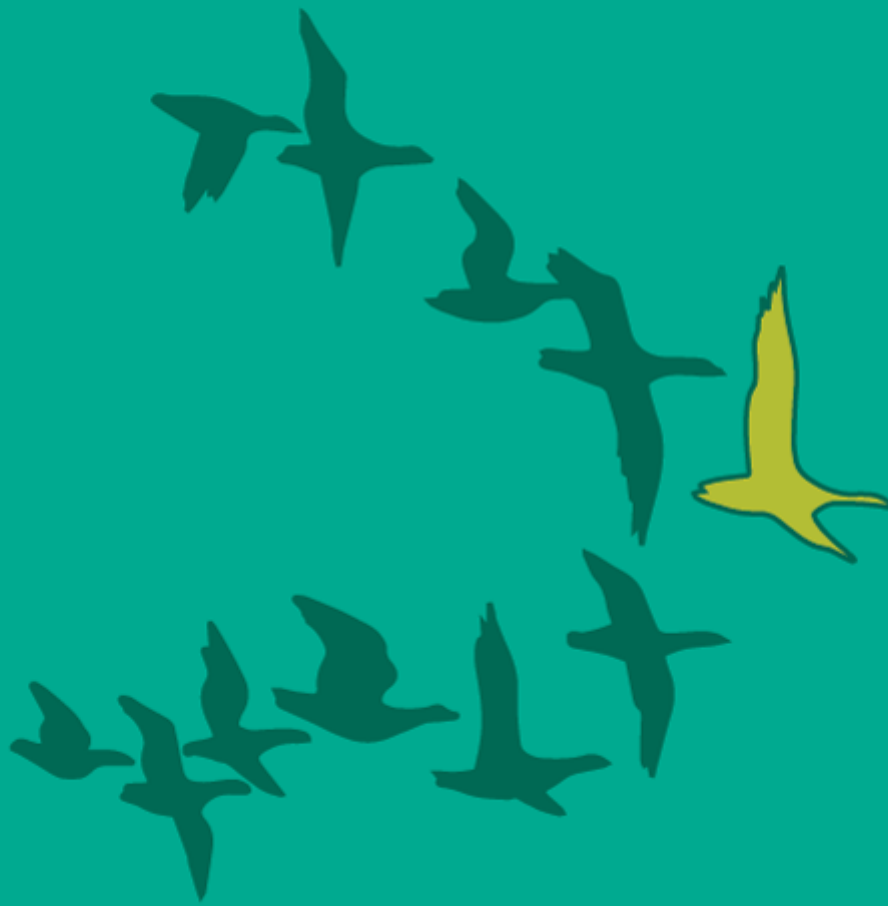
Click the tiles below for more:

- **Training Services:** Skillsoft Percipio (our learning management system), LinkedIn Learning, and other training.
- **Leadership:** Excellence in Leadership program objectives and eligibility.
- **Additional Services:** Consulting, community of practice, and more.

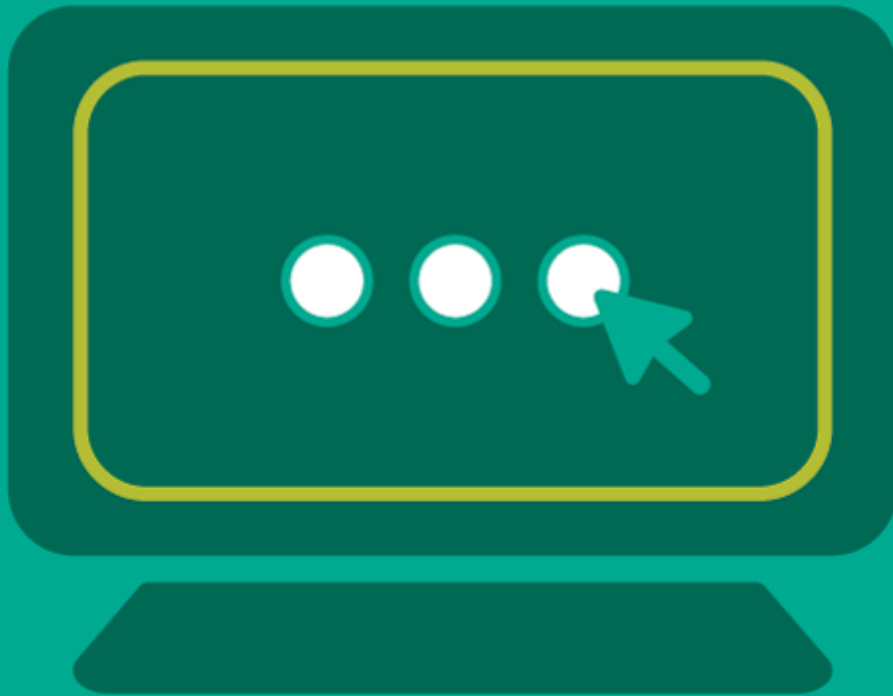


^[2]

LEADERSHIP



ADDITIONAL SERVICES



[4]

Note: Don't forget, you can also take advantage of the CU Tuition Assistance Benefit (TAB) [5].

Groups audience:
Employee Services

Source URL: <https://www.cu.edu/employee-services/professional-growth-training>

Links

[1] <https://www.cu.edu/employee-services/professional-growth-training> [2] <https://www.cu.edu/employee-services/career-advancement-learning/training-services> [3] <https://www.cu.edu/employee-services/excellence-leadership-program> [4] <https://www.cu.edu/employee-services/professional-growth-training/training-services/additional-services> [5] <https://www.cu.edu/employee-services/benefits-wellness/current-employee/tuition-assistance>