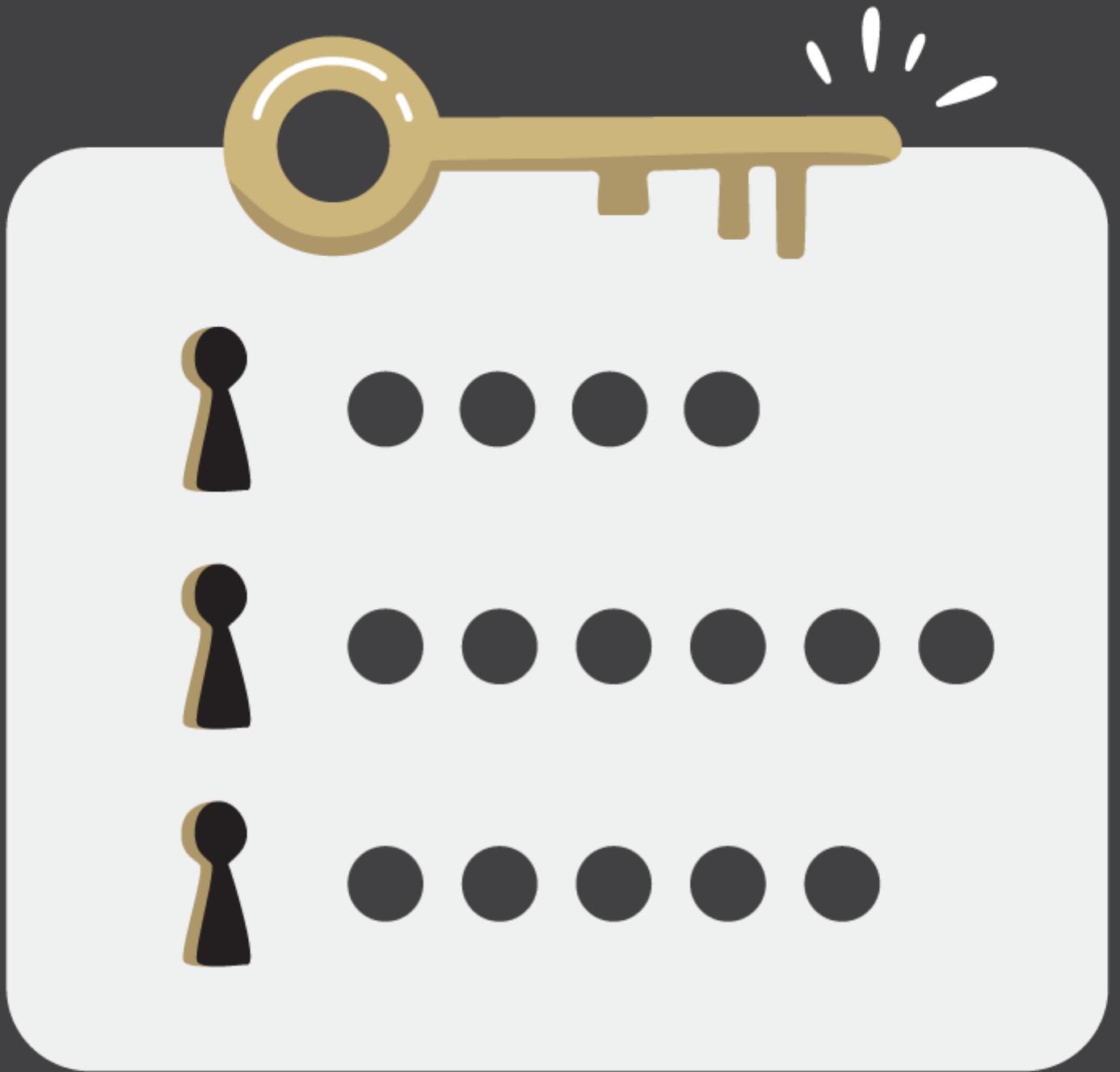


## **Access and IT Security** <sup>[1]</sup>

**UIS is committed to protecting CU's information security.**

Our charter includes developing and executing on policy for authentication to systems, technology usage and conducting risk assessments, along with many additional System Administration information security needs.





# IDENTITY & PASSWORD MANAGEMENT



# CU IDENTITY MANAGER



# CAMPUS ACCESS COORDINATORS



# ONBOARDING & EMPLOYEE MANAGEMENT

## Have questions?

Email [access@cu.edu](mailto:access@cu.edu) [7] to speak with a member of the UIS Access and Identity Management team.

## Learn more about the Identity & Access Management team

The Identity and Access Management (IAM) team serves the entire CU community in partnership with CU campus IT departments, CU campus IDM/IAM teams, campus security approvers, and other business stakeholders.

### Services

The IAM team provides the following services for CU enterprise applications and various System Administration applications:

- Access Control
  - Authentication (Authn)
    - Single Sign On (SSO)
    - Federated Authentication
    - LDAP Authentication
    - Local/Native Authentication
    - Multi-Factor Authentication
  - Application Firewalls
    - ERP Firewall
    - Custom Access Control Filters
- Identity Management
  - Authorization Management (Authz)
    - Application Security (Enterprise Applications)
      - Application Roles and Permissions
    - Role Based Access Control (RBAC)
    - API Authorization
  - Provisioning
    - Access Request Processing
    - Provisioning/De-provisioning
    - Enterprise Application Account Support
    - Account Management
    - Password Management
- Directory Services
  - Directory Stores
  - Directory Virtualization
-

## Audit Support

- Identity Analysis
- Segregation of Duties Management
- Access Audits
- Data Protection

## CU Identities/Accounts

- CU System ID
  - Active Directory account at CU System Administration for access to most resources.
- CU PeopleSoft ID
  - OID account used for accessing certain PeopleSoft resources via LDAPS.
    - Application Designer
    - Bypass Logins
- CIW Account
- ISSM Account
- DARWin/u.Achieve Account

## Applications

- Identity Providers
  - PingFederate
  - ADFS
  - FedAuthN
- Authentication
  - Duo Security
  - PeopleSoft
- Directory
  - Active Directory
  - Oracle Internet Directory
  - Oracle Unified Directory
  - Oracle Virtual Directory
- Identity Governance
  - Oracle Identity Manager
- Access Management
  - ERP Firewall
- Application Security
  - PeopleSoft
  - ISSS
  - uAchieve
  - CIW

## The Team

The IAM Team includes:

- IAM Developers
- IAM Business Analysts
- IAM Account Support Specialists

- PeopleSoft Security Admins

**Groups audience:**

University Information Services

---

**Source URL:**<https://www.cu.edu/uis/access-and-it-security>

**Links**

[1] <https://www.cu.edu/uis/access-and-it-security> [2] <https://www.cu.edu/uis/access-it-security/request-access> [3] <https://www.cu.edu/iam> [4] <https://www.cu.edu/uis/access-it-security/cu-identity-manager> [5] <https://www.cu.edu/uis/access-it-security/campus-access-coordinators> [6] <https://www.cu.edu/uis/access-it-security/onboarding-employee-management> [7] <mailto:access@cu.edu>